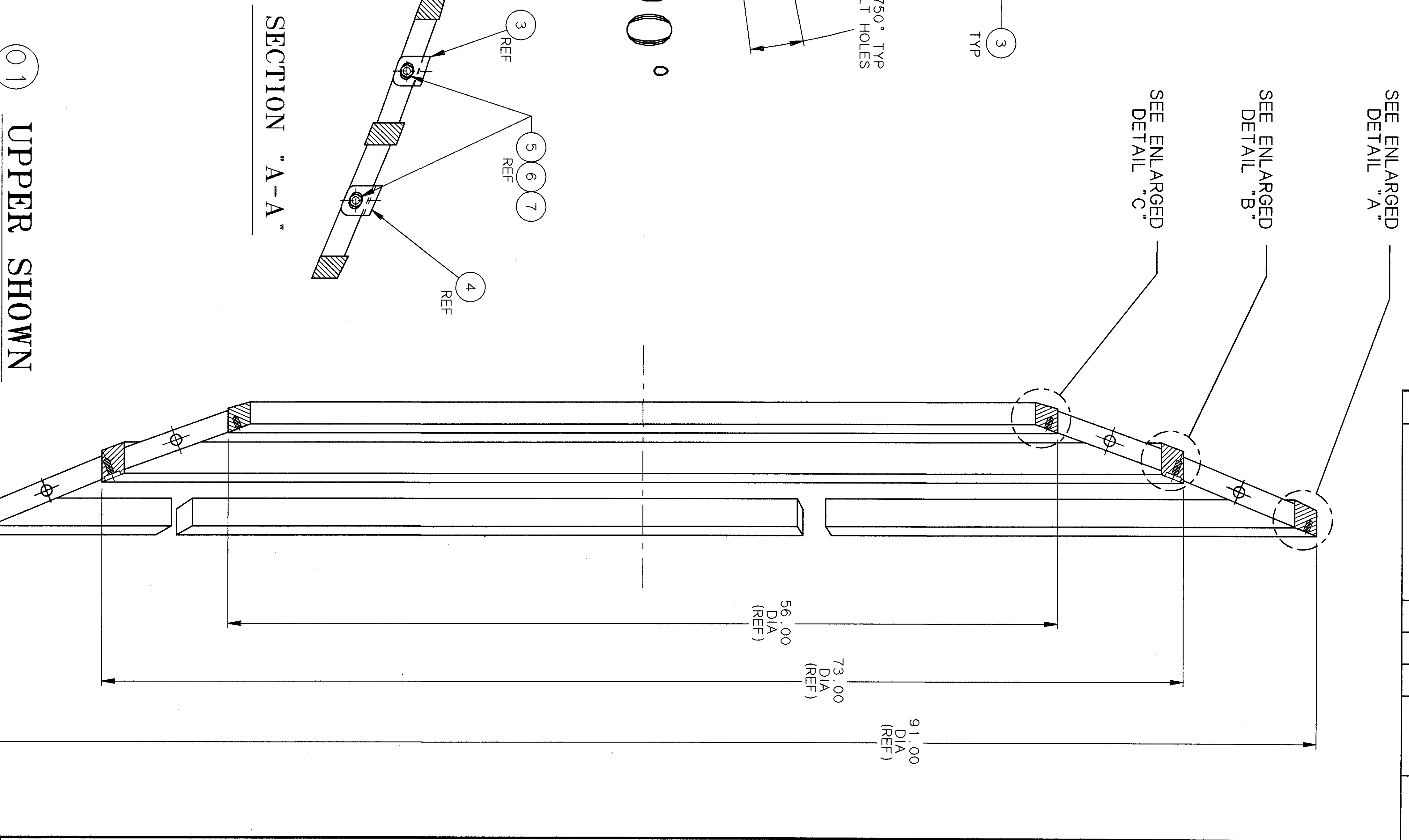
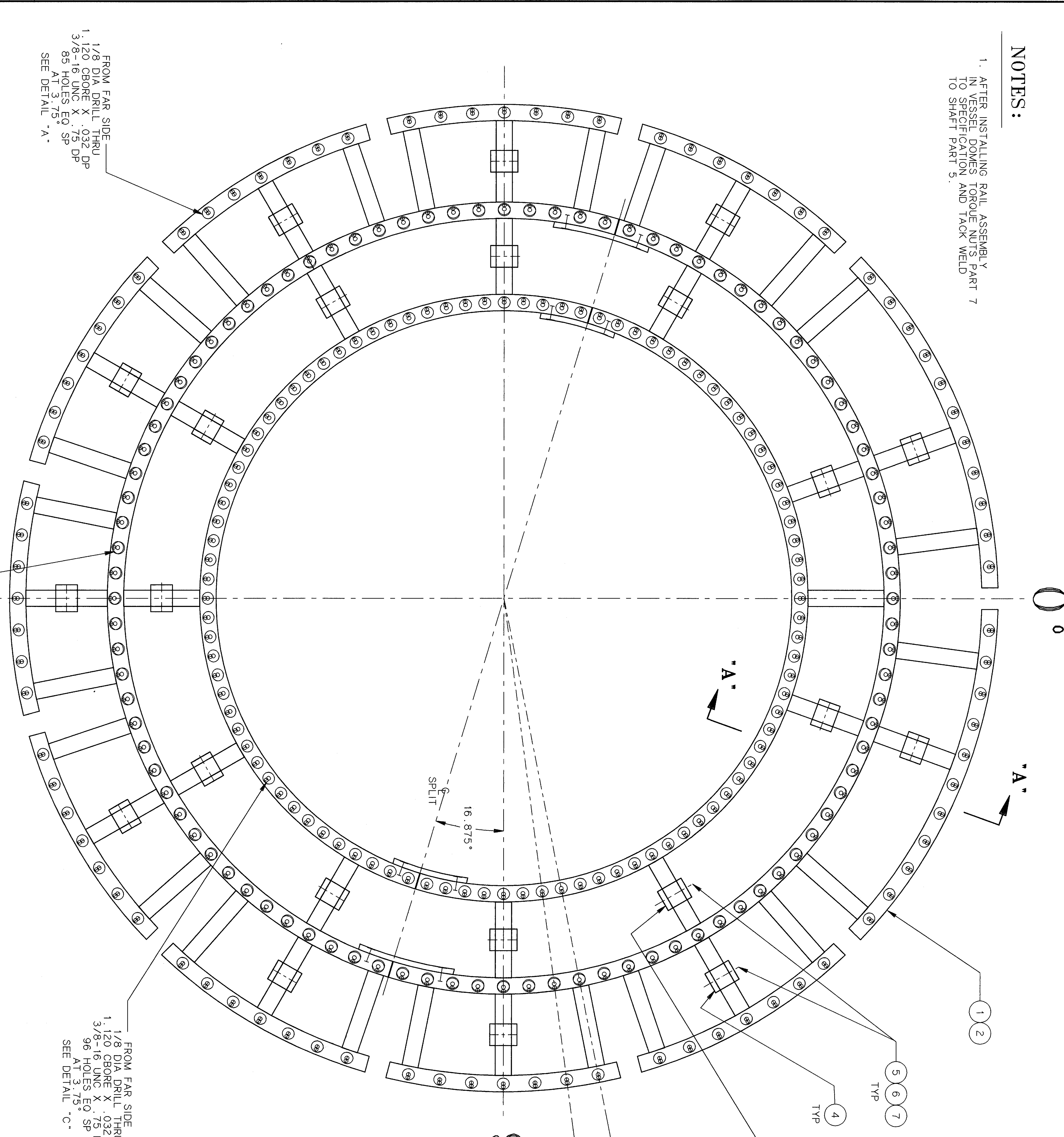
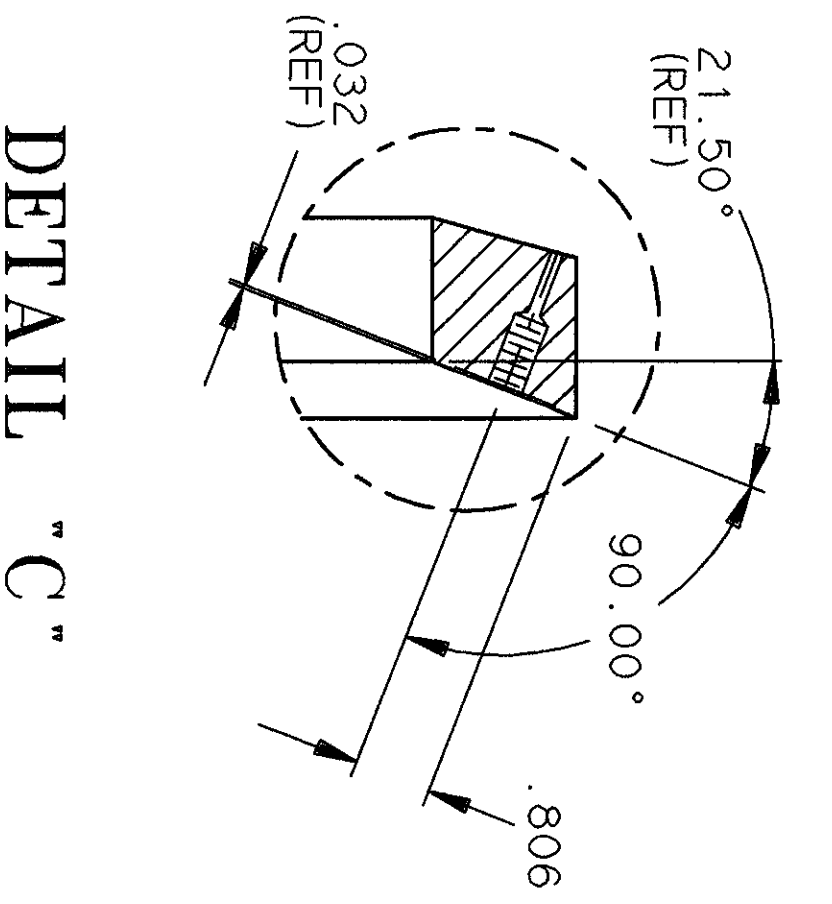
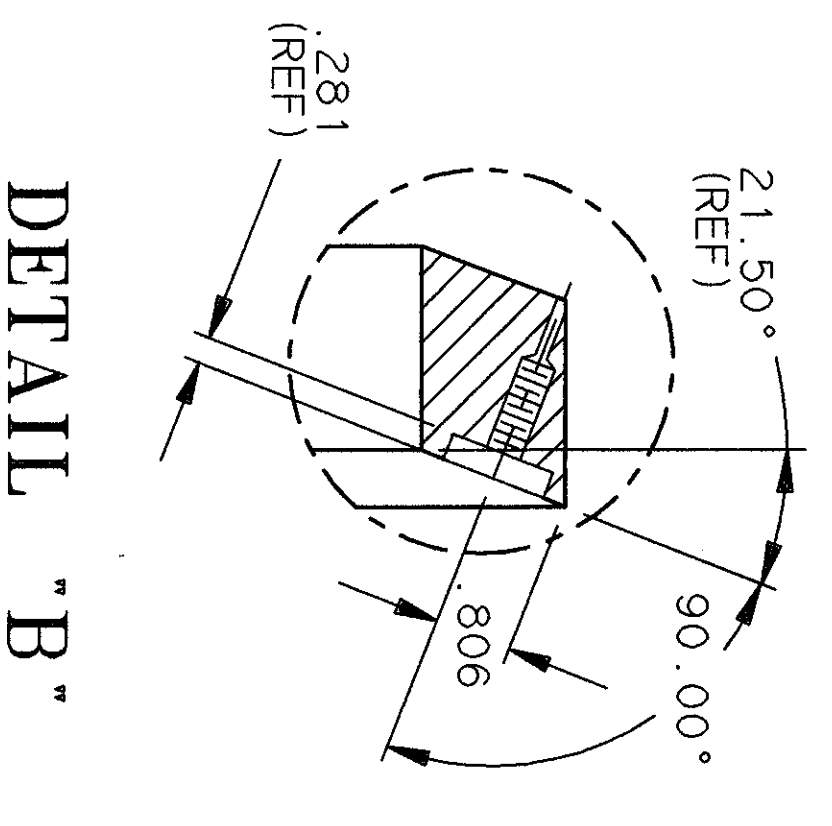
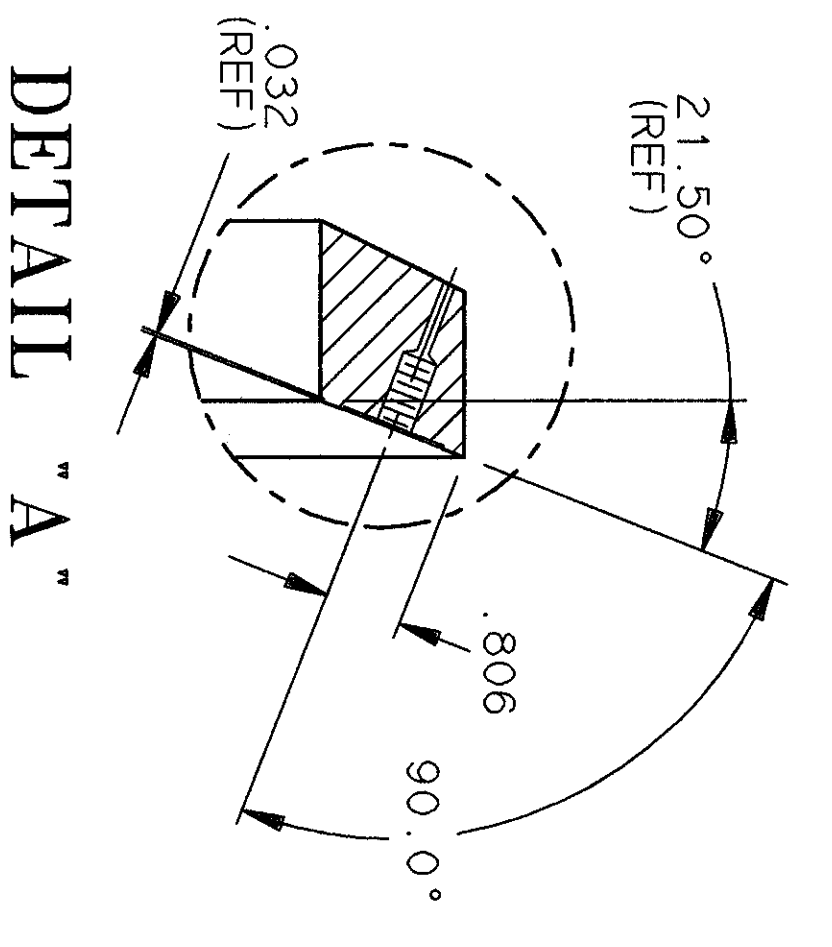


NO	REVISION	BY	CHK	SUP	APPROVED	DATE

NOTES:
 1. AFTER INSTALLING RAIL ASSEMBLY IN VESSEL DOMES TORQUE NUTS PART 7 TO SPECIFICATION AND TACK WELD TO SHAFT PART 5



01 UPPER SHOWN



FROM FAR SIDE
 1/8 DIA DRILL THRU
 1.120 CBORE X .032 DP
 3/8-16 UNC X .75 DP
 85 HOLES EQ SP
 SEE DETAIL "A"

FROM FAR SIDE
 1/8 DIA DRILL THRU
 1.120 CBORE X .281 DP
 3/8-16 UNC X 1 DP
 96 HOLES EQ SP
 SEE DETAIL "B"

FROM FAR SIDE
 1/8 DIA DRILL THRU
 1.120 CBORE X .032 DP
 3/8-16 UNC X .75 DP
 96 HOLES EQ SP
 AT 3.75"
 SEE DETAIL "C"

QTY	PART NO.	DESCRIPTION	UNIT	DATE	DRW	APP	REV
44	44	1/2-13 UNC HEX NUT	COMM				
44	44	1/2 LOCKWASHER	COMM				
22	22	YOKE SHAFT	EDB1016-3				
11	11	LONG BRACE MOUNTING YOKE	EDB1016-2				
11	11	SHORT BRACE MOUNTING YOKE	EDB1016-1				
1	1	UPPER RAIL WELDING/ASSEMBLY	EDB1014-01				
1	1	LOWER RAIL WELDING/ASSEMBLY	EDB1014-02				
1	1	UPPER RAIL ASSEMBLY	THIS DWG				
1	1	LOWER RAIL ASSEMBLY	THIS DWG				

03	02	01	03	02	01	03	02	01	03	02	01	03	02	01
COMP'D	DRW	GEN	APP'D	CHK'D	DESIGN	APP'D	CHK'D	DESIGN	APP'D	CHK'D	DESIGN	APP'D	CHK'D	DESIGN
WELDING ENGINEER	DATE	DATE	DATE	DATE	DATE	DATE	DATE	DATE	DATE	DATE	DATE	DATE	DATE	DATE