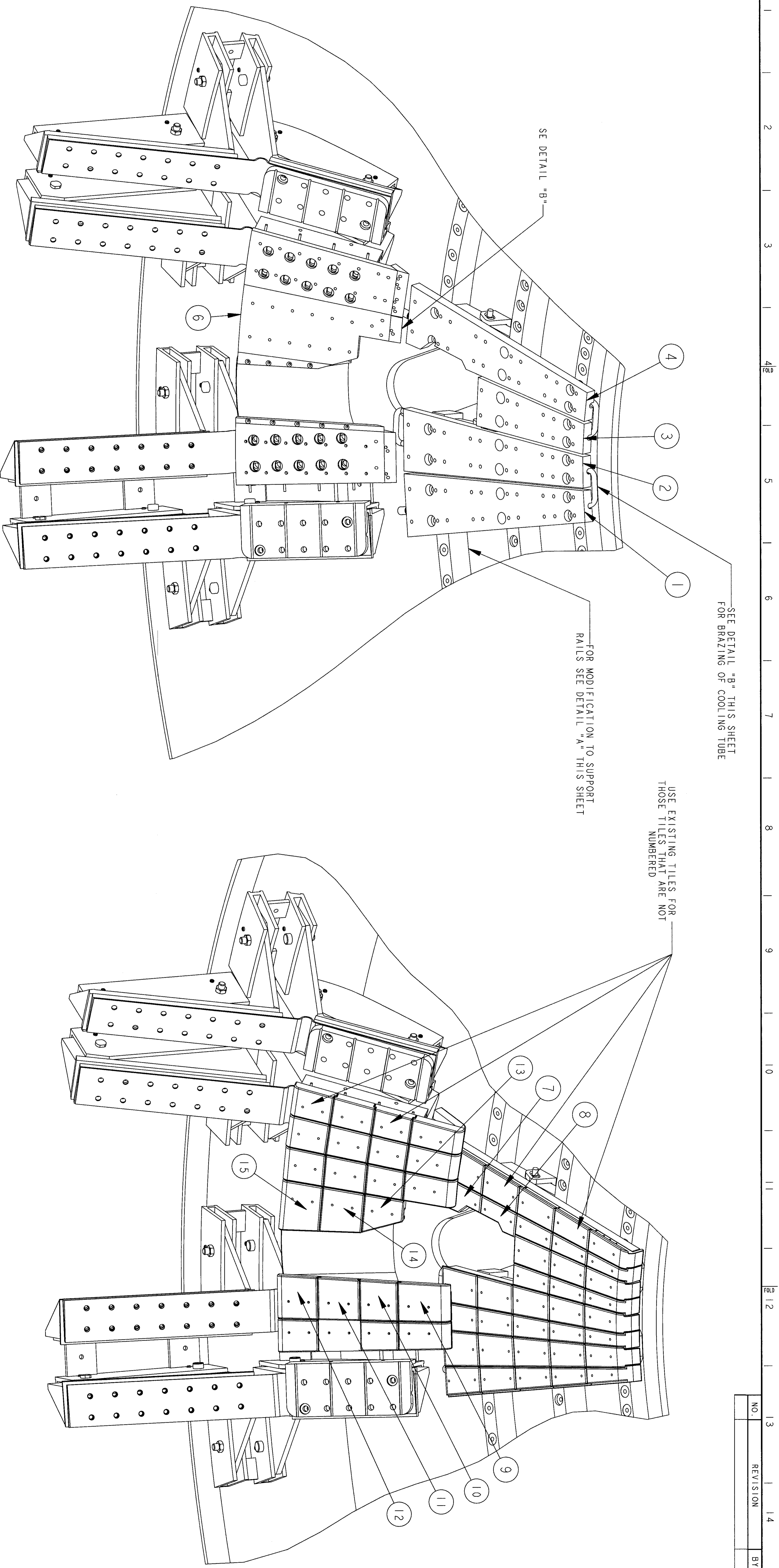
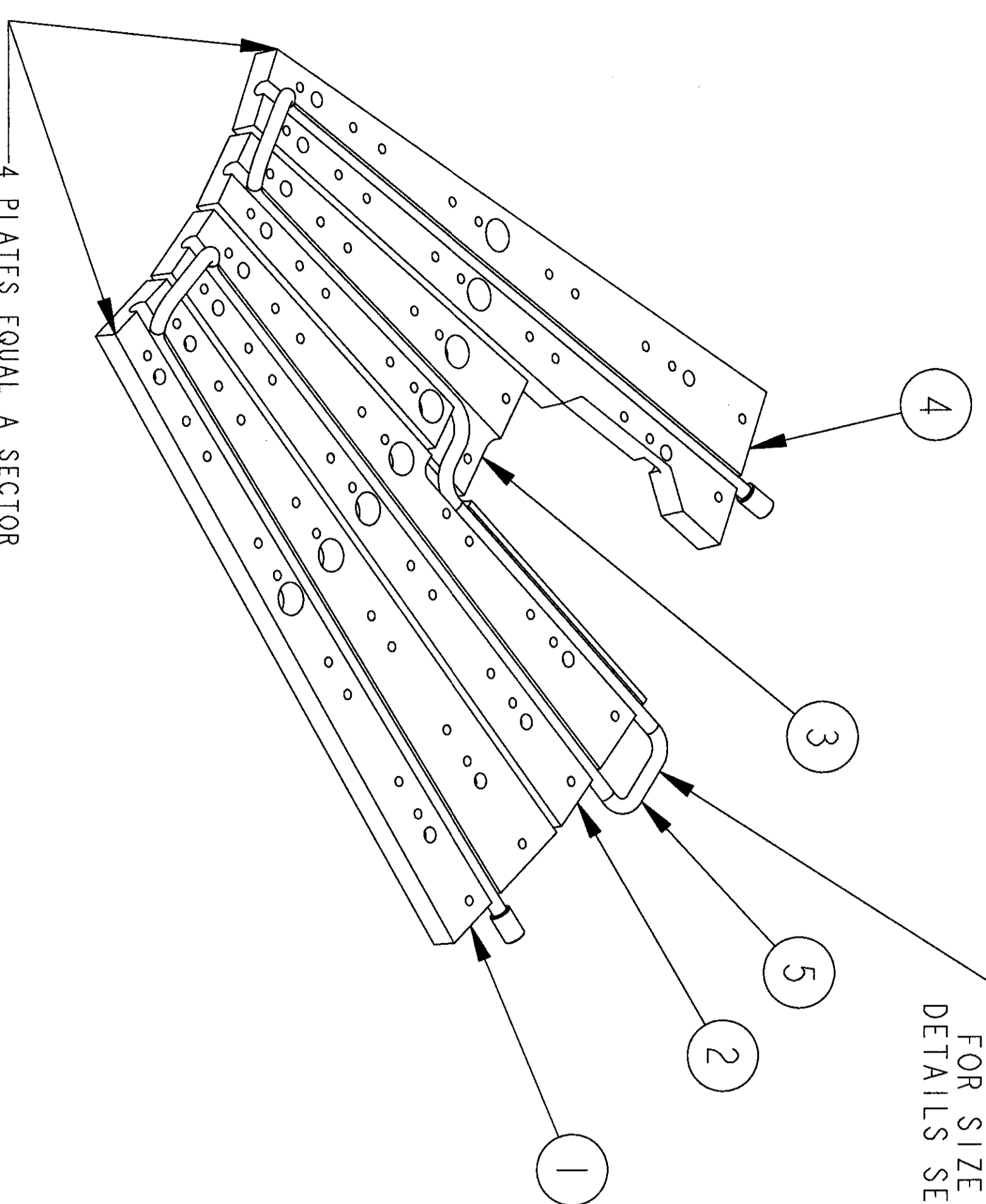


NO.	REVISION	BY	CHK	SUP	APPROVED	DATE

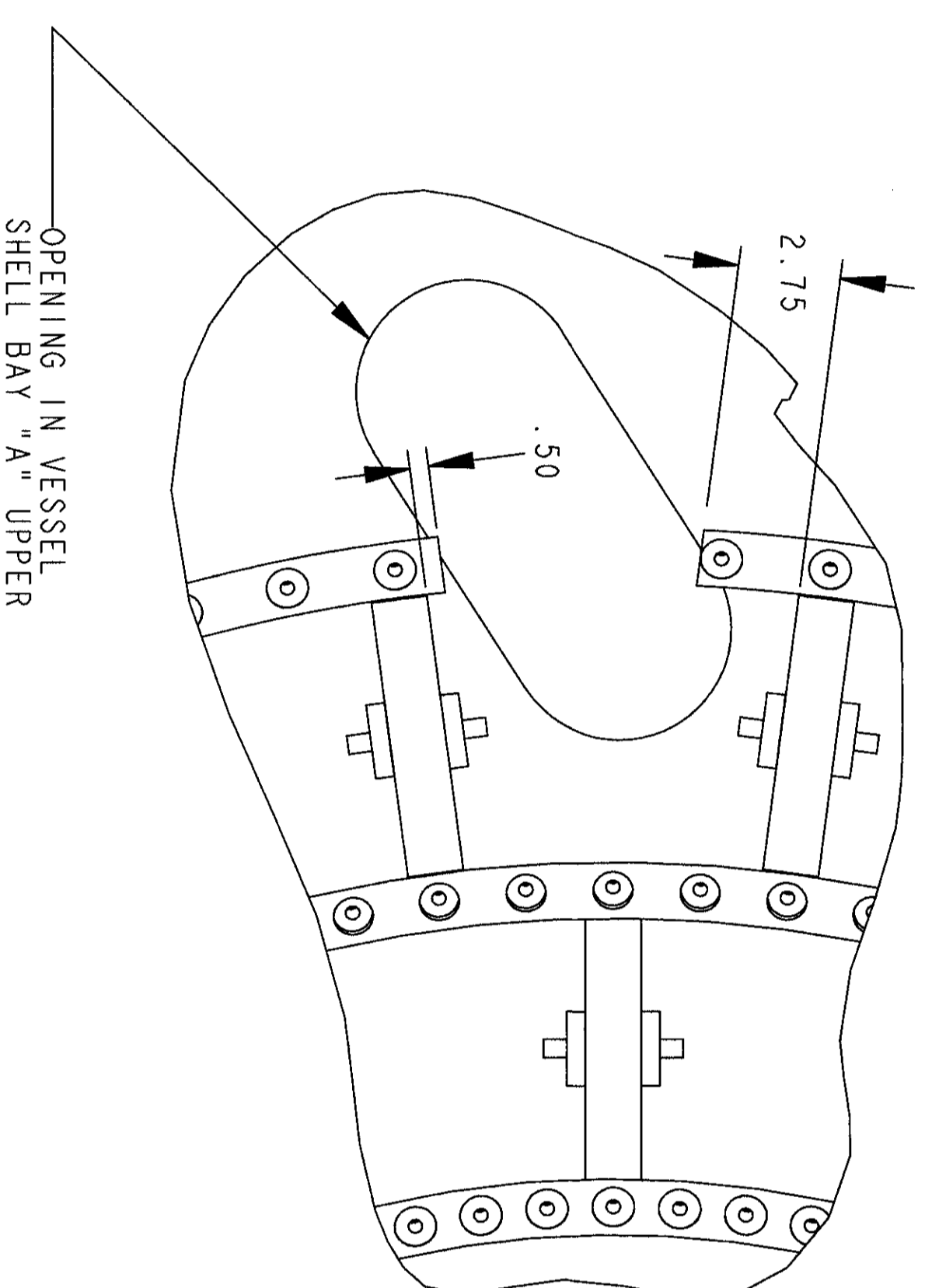


**BAY "A" UPPER OPENING  
DIVERTOR AND SECONDARY PASSIVE PLATE  
MODIFICATION ASSY**

EXISTING HARDWARE TO BE USED TO MOUNT  
DIVERTOR PLATES AND SECONDARY PASSIVE PLATE



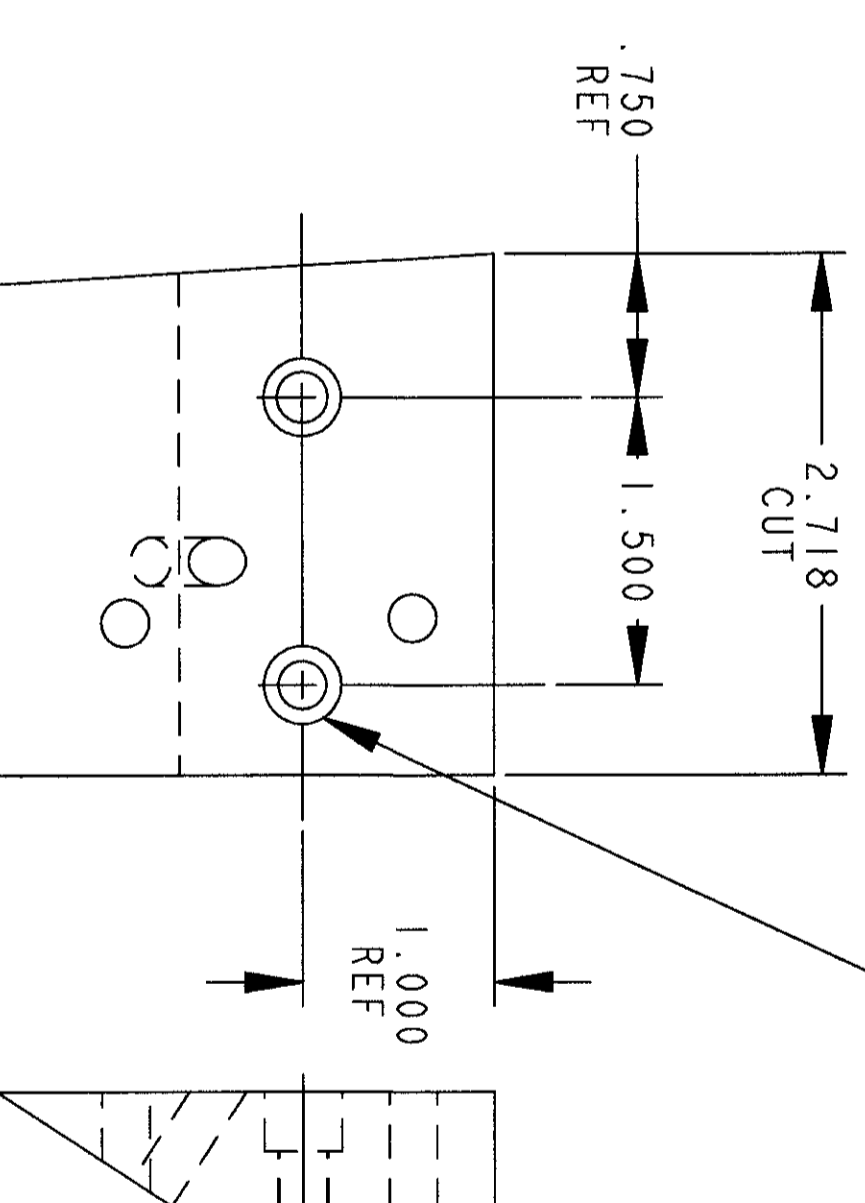
TUBING TO BE BENT TO MATCH  
MACHINED GROOVES IN PLATES  
FOR SIZE AND ADDITIONAL BEND  
DETAILS SEE DWG: X3E017104A183



OPENING IN VESSEL  
SHELL BAY "A" UPPER

**BAY "A" UPPER OPENING  
DIVERTOR AND SECONDARY PASSIVE  
TILE MODIFICATION ASSY**

EXISTING HARDWARE TO BE USED  
TO MOUNT THE BARS AND TILES



**DETAIL "B"  
MODIFICATION TO  
PART EDB1045**

ASSY QTY	PART NO.	DRAWING NO	DESCRIPTION	MATERIAL
15	E-DB1325-7		SECONDARY PASSIVE PLATE TILE	SEE DWG
14	E-DB1325-6		SECONDARY PASSIVE PLATE TILE	SEE DWG
13	E-DB1325-5		SECONDARY PASSIVE PLATE TILE	SEE DWG
12	E-DB1325-4		SECONDARY PASSIVE PLATE TILE	SEE DWG
11	E-DB1325-3		SECONDARY PASSIVE PLATE TILE	SEE DWG
10	E-DB1325-2		SECONDARY PASSIVE PLATE TILE	SEE DWG
9	E-DB1325-1		SECONDARY PASSIVE PLATE TILE	SEE DWG
8	E-DB1321-3		UPPER DIVERTOR TILES	SEE DWG
7	E-DB1321-2		UPPER DIVERTOR TILES	SEE DWG
6	E-DB1326-1		SECONDARY PASSIVE PLATE JUMPER	SEE DWG
5	THIS DWG		TUBING AND FITTINGS TO MATCH EXISTING SEE DETAIL "B" FOR ROUTING	----
4	E-DB1319-4		UPPER OUTBOARD DIVERTOR PLATE	SEE DWG
3	E-DB1319-3		UPPER OUTBOARD DIVERTOR PLATE	SEE DWG
2	E-DB1319-2		UPPER OUTBOARD DIVERTOR PLATE	SEE DWG
1	E-DB1319-1		UPPER OUTBOARD DIVERTOR PLATE	SEE DWG
X	THIS DWG		BAY "A" UPPER DIAG OPENING ASSY	SEE DWG
03	02	01		

COMPUTER GENERATED DRAWINGS AND DIMENSIONS UNLESS OTHERWISE SPECIFIED DIMENSIONS ARE IN INCHES MACHINE SURFACES UNLESS OTHERWISE SPECIFIED BREAK SHAPE ENDS .50X1.000

PRINCETON PLASMA PHYSICS LABORATORY NATIONAL SPHERICAL TORUS EXPERIMENT POLYODIAL ROTATION DIAGNOSTIC DIVERTOR AND SECONDARY PASSIVE PLATE MODIFICATION WITH ASSEMBLY OF TILES OF OPENING

DESIGNED BY: R. F. FEUER DATE: 7/14/04

APPROVED BY: [Signature] DATE: 7/14/04

DECIMAL-FRACTION FRACTIONS DIV: MECH. ENG. ENG: B. FEUER

APPD: [Signature] DATE: 7/14/04

WELDING ENGINEER DATE: 7/14/04

APPD: [Signature] DATE: 7/14/04

NO. 13 REVISION 14 BY CH SUP APPROVED 15 DATE

PRINCETON PLASMA PHYSICS LABORATORY NATIONAL SPHERICAL TORUS EXPERIMENT POLYODIAL ROTATION DIAGNOSTIC DIVERTOR AND SECONDARY PASSIVE PLATE MODIFICATION WITH ASSEMBLY OF TILES OF OPENING

DESIGNED BY: R. F. FEUER DATE: 7/14/04

APPROVED BY: [Signature] DATE: 7/14/04

WELDING ENGINEER DATE: 7/14/04

APPD: [Signature] DATE: 7/14/04

E-DB1329

SHEET 1 OF 1 REV 0