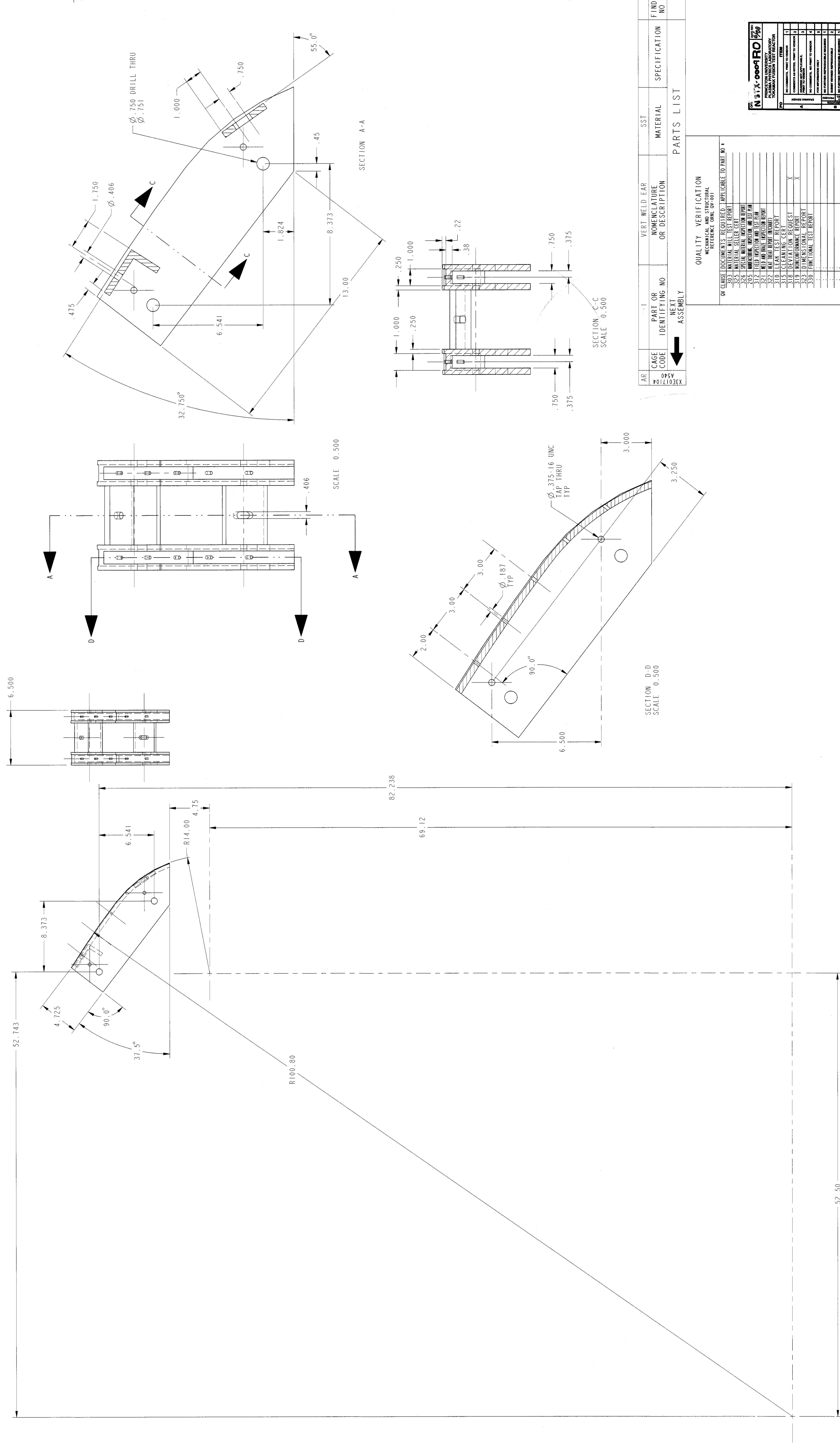


NEXT ASSY TO:      2      3      4      5      6      7      8

FINAL ASSY TO:      2      3      4      5      6      7      8

**NOTES**

1. INTERPRET DRAWING PER MECHANICAL ENGINEERING DRAFTING STANDARD ES-3:1-2.
2. INTERPRET DIMENSIONS AND TOLERANCES PER ANSI Y14.5M.
3. DIMENSIONS ARE IN INCHES.
4. ONE PIECE CONSTRUCTION PREFERRED. OPTIONAL WELDED CONSTRUCTION PERMISSIBLE WITH FULL PENETRATION CONTINUOUS BEVEL OR V-GROOVE WELDS.



AR	CASE CODE	PART OR IDENTIFYING NO.	VERT. WELD-EAR NOMENCLATURE OR DESCRIPTION	SST	MATERIAL	SPECIFICATION	FIND NO.
AS40							
<b>PARTS LIST</b>							

**QUALITY VERIFICATION**

MECHANICAL AND STRUCTURAL  
APPLICABLE TO PART NO. 1

OR	CHECK	REQUIREMENTS	TEST REPORT	APPLICABLE TO PART NO. 1
303	MATERIAL	MATERIAL TEST REPORT		
326	SPECIAL MATERIAL	SPECIAL MATERIAL INSPECTION REPORT		
305	WELDING	WELDING INSPECTION AND TEST REPORT		
321	WELD	WELD METAL TENSILE REPORT		
322	WELD	WELD METAL TENSILE REPORT		
310	LEAK	LEAK TEST REPORT		
315	CLEANING	CLEANING CHECKLIST		
319	NON-DAMAGE	NON-DAMAGE REPORT		
323	DIMENSIONAL	DIMENSIONAL REPORT		
330	FUNCTIONAL	FUNCTIONAL TEST REPORT		
100	INSPECTION	INSPECTION REPORT		

1. NUMBER 1 INDICATES APPLICABLE TO ALL PARTS OR THICKNESSES.

ON COMBINATION: 6714/5P

**LOCKHEED MARTIN** LOCKHEED MARTIN ENERGY SYSTEMS, INC.  
OFFICE OF THE DEPARTMENT OF ENERGY UNDER U.S. GOVERNMENT CONTRACT DE-AC-65-80RD140  
 OAK RIDGE, TENNESSEE

**NSIX**

**SEC PASSIVE PLATE**  
**FLEX SUPPORT BRKT**  
**VERTICAL WELD EAR**

REV	DATE	DESCRIPTION	BY	CHK	DEPT	DATE	REV	DATE	DESCRIPTION	BY	CHK	DEPT	DATE
0		ORIGINAL ISSUE	MTR			3/7/98							

DRAWING APPROVALS: DATE

DESIGNED BY: GORANSON, GORANSON  
 DRAWN BY: BROWN, BROWN  
 CHECKED BY: JEFFREY, JEFFREY  
 REVISIONS BY: JEFFREY, JEFFREY  
 DATE: 6/17/98  
 FILE NO: 6714/5P  
 PART NO: 6714/5P

**SEC PASSIVE PLATE**  
**FLEX SUPPORT BRKT**  
**VERTICAL WELD EAR**

REV	DATE	DESCRIPTION	BY	CHK	DEPT	DATE			
1	48	50	PLANT	BIDG	FL	SHT	OF	TYPE	CLASS
3	M	E	U	Y	-12	EEDC	1	I	S
51		52	53						

DATE: 6/17/98

FILE NO: 6714/5P

PART NO: 6714/5P

REV	DATE	DESCRIPTION	BY	CHK	DEPT	DATE	REV	DATE	DESCRIPTION	BY	CHK	DEPT	DATE
0		ORIGINAL ISSUE	MTR			3/7/98							

**SCALE**: .75  
 TOLERANCES UNLESS OTHERWISE SPECIFIED

**FRACTIONS**: 1/16  
 XX DECIMALS: 4.00  
 XXX DECIMALS: 4.000  
 ANGLES: 48.15  
 BREAK SHARP EDGES: 0.125  
 FINISH: AS SHOWN

DATE: 6/17/98

FILE NO: 6714/5P

PART NO: 6714/5P

**P** THIS DRAWING PRODUCED ON PRO-ENGINEER

THIS DOCUMENT CONTROLLED BY CHANGE CONTROL SYSTEM - 1P-C-108 - ENGINEERING PROCEDURE

FOR INFORMATION ON THE MECHANICAL ENGINEERING DRAWING STANDARDS, SPECIFICATIONS, OR INFORMATION OR STATEMENTS CONTAINED IN THESE DRAWINGS, OR THE METHOD OR PROCESS DISCLOSED IN THESE DRAWINGS, CONTACT THE CONTRACTOR WITH RESPECT TO THE USE OF OR FOR DAMAGES RESULTING FROM DISUSE OF THESE DRAWINGS. DRAWINGS MADE AVAILABLE FOR INFORMATION TO BIDDERS ARE NOT TO BE USED FOR OTHER PURPOSES WITHOUT THE WRITTEN PERMISSION OF THE CONTRACTOR.