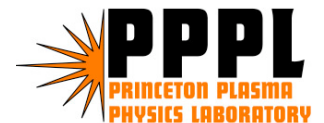


# PPPL Institutional Issues

---

**R. J. Hawryluk**

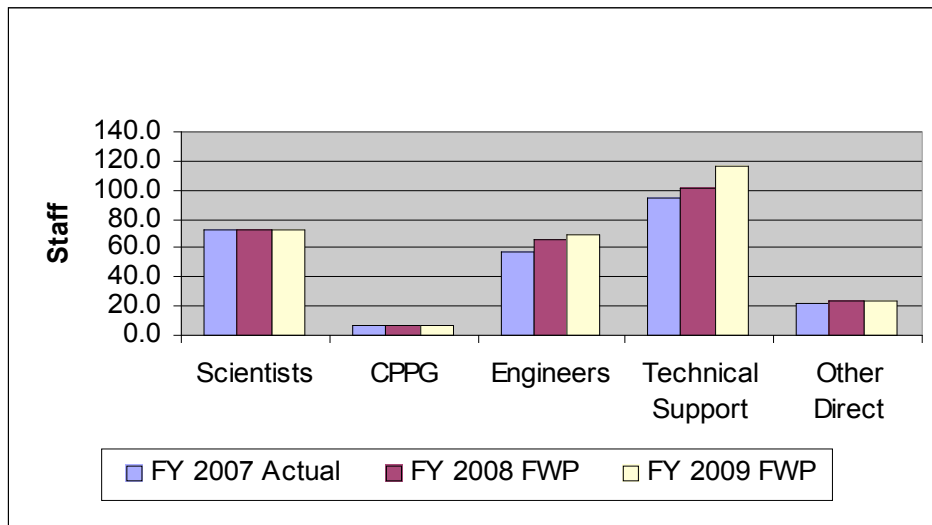
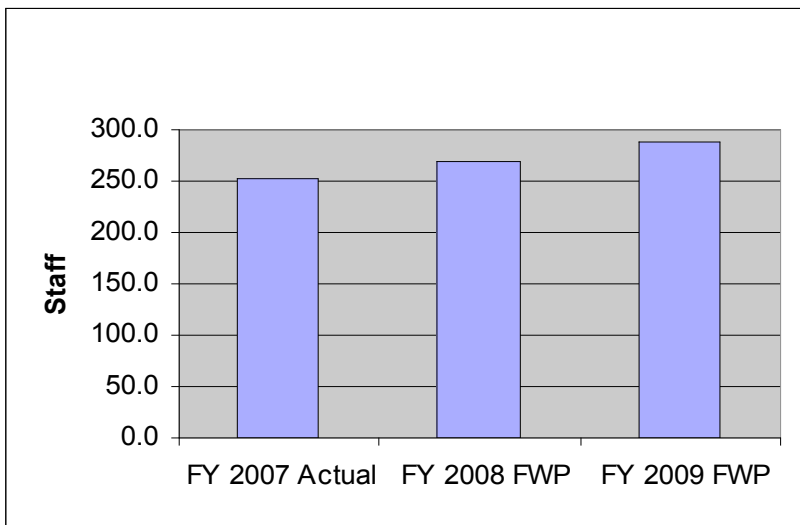
**Office of Fusion Energy Sciences  
Budget and Planning Meeting  
March 13-14, 2007**



# Budget Requirements to Support OFES Programs

Project	FY 2007 Jan AFP*	FY 2008		FY 2009	
		Base	Inc.	Base	Inc.
NSTX	29.2	30.6	3.6	31.2	3.9
NCSX	15.0	15.4	2.4	18.3	2.4
QPS / ARIES	0.4	0.4	2.4	0.4	2.4
DIII-D / C-MOD Coll.	6.1	6.5	1.1	6.6	1.3
International Col.	2.2	2.4	1.0	2.5	1.7
ITER (excl. flow thru M&S)	3.9	6.5		7.3	
PS&T	4.1	4.3	1.0	4.3	2.3
Heavy Ion Beams	1.0	1.0	0.6	1.0	0.6
Diagnostic Development	0.5	0.5	-	0.5	-
Theory / SciDAC	7.0	7.0	1.0	7.2	1.1
Science Education	0.5	0.7	0.1	0.8	0.1
General Plant Projects	1.8	1.9	0.4	1.9	0.6
All Other	0.6	1.0	-	1.0	-
<b>Total OFES (dollars in millions)</b>	<b>72.3</b>	<b>78.2</b>	<b>13.6</b>	<b>83.0</b>	<b>16.4</b>

# Direct Staffing Covered by OFES Funding Plan



- Increase in technical support is accomplished by term labor to support NCSX construction and startup.

# Broader S&T Outreach

---

	Mar. 06 to Mar. 07
<b>Presentations at Colleges and Universities to Non-plasma Majority Scientific Audiences</b>	<b>5 1</b>
<b>Collaborations with Institutions Outside of Plasma Physics</b>	<b>2 8</b>
<b>Invited Talks at Non-plasma Specific Meetings</b>	<b>2 2</b>
<b>Publications in Broader Science Journal</b>	<b>1 1 4</b>
<b>Leadership Positions</b>	<b>4 2</b>

# PPPL is Actively Supporting ITER

---

- **ITER Design Review Working Group Participation**

Buildings - C. Neumeyer, H&CD - J. Hosea, L. Grisham

Design Req's - R. Hawryluk In-vessel Comp's - C. Skinner, D. Johnson

Several other researchers and engineers are presently addressing tasks related to the Design Review.

- **Burning Plasma Organization**

Council Vice Chair - M Zarnstorff

Broad research participation including TG leaders/deputies

J. Menard, C. Phillips, R. Nazikian, D. Gates, C. Kessel

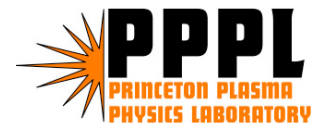
- **ITER Project Responsibilities**

WBS Responsibility - Steady State Electric Power - C. Neumeyer,

Diagnostics - D. Johnson

Engineering - TF conductor R&D, Design support for CS

ICH transmission line R&D support



# Impact of a 10% Reduction in '09 Relative to the Base Case

---

- **Staffing Impact**
  - The “10% reduction in '09” would result in a loss of ~35 scientists, engineers, technicians and administrators relative to present staff.
- **Programmatic Impact ( if ~35 staff were reduced)**
  - NSTX operation decreased from 12 to 6 weeks, upgrades drastically cut back.
    - Delay high power ECH by one year.
  - Delay in NCSX upgrades jeopardizes FY'11 run schedule.
  - Loss of staff with unique skills will have a profound impact of being able to execute and support the diversity of programs.
  - Unable to meet Office of Science expectations on facility maintenance initiatives and GPP.
  - Increased risk in meeting environmental, financial and other regulatory requirements.

# Summary

---

- **PPPL participates in, and supports, the broad portfolio of research activities in OFES.**
  - **Strong elements of our program are:**
    - **collaboration on PPPL facilities and**
    - **collaboration on other facilities around the nation and the world.**
  - **Inter-institutional collaborations prepare us for ITER and beyond.**
- **All large facilities, including NSTX and NCSX, would make a greater impact with more run time and upgrades.**
- **ITER is a major scientific opportunity for the entire Fusion Energy Science community**
  - **PPPL looks forward to continuing to contribute to ITER in collaboration with the community.**