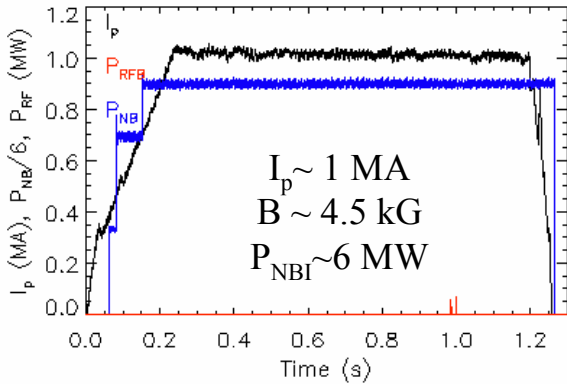


# NSTX - XP 613

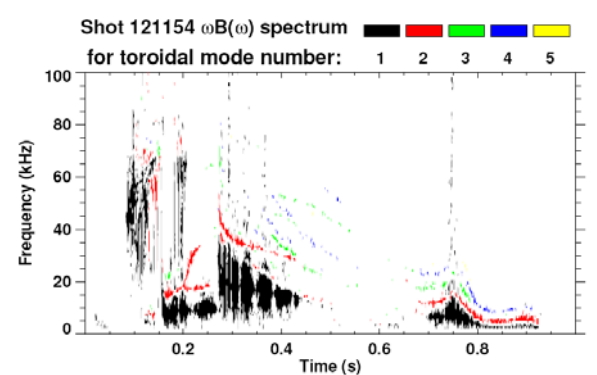
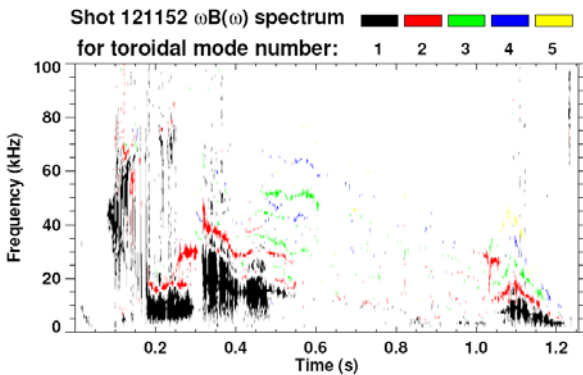
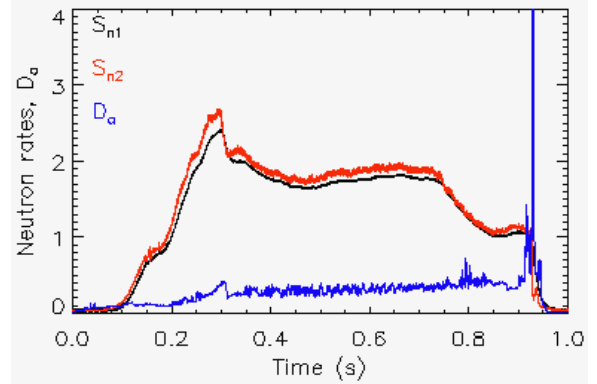
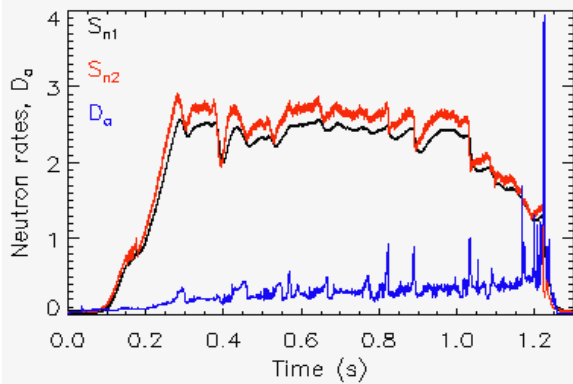
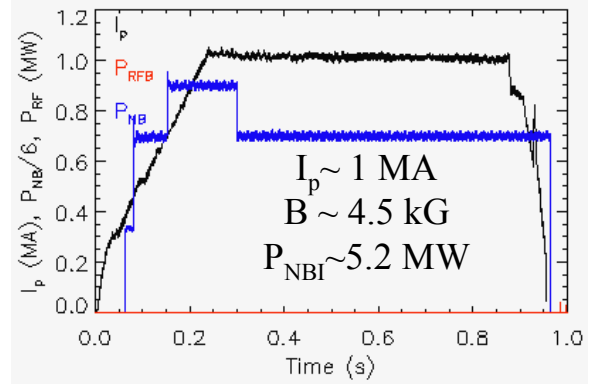
## Impurity transport in H-modes

### BASELINES

NSTX # 121152



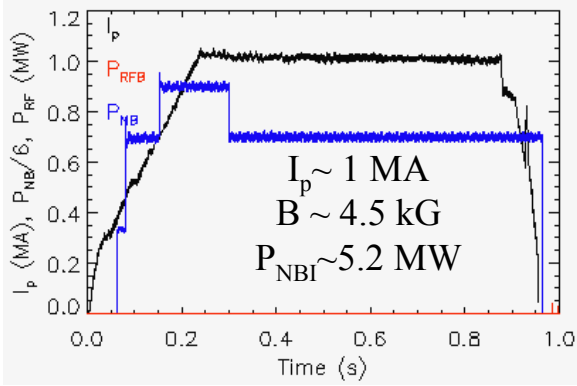
NSTX # 121154, 121162



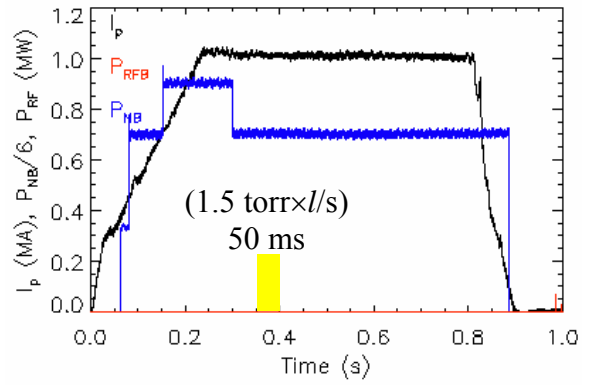
# XP 613

## (1MA, 4.5 kG: Baseline vs. Neon)

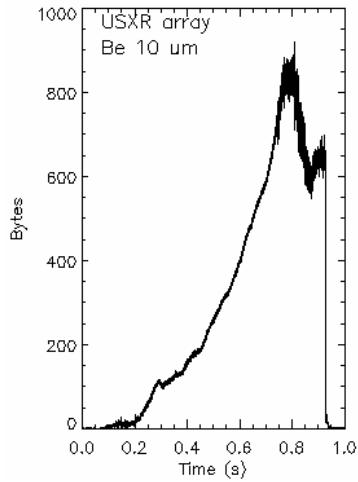
NSTX # 121154



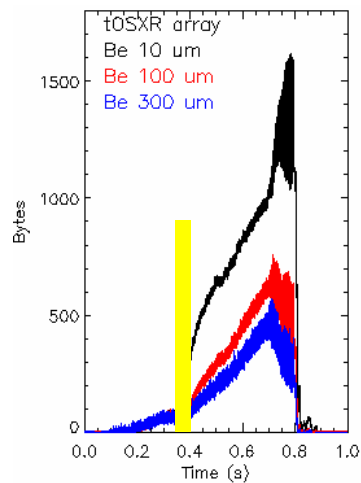
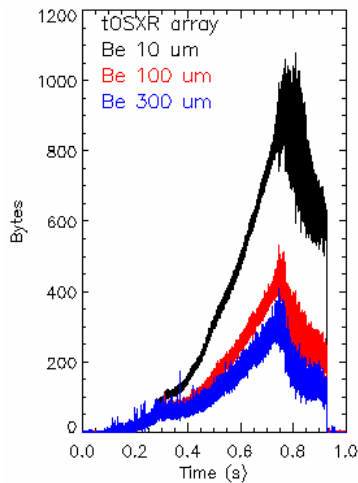
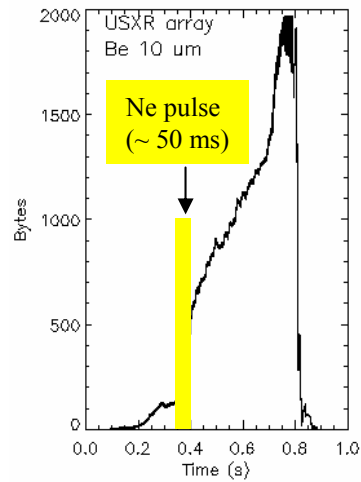
NSTX # 121165



Baseline



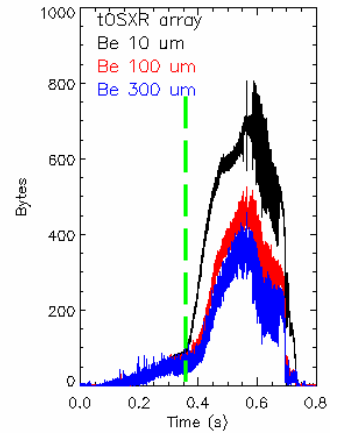
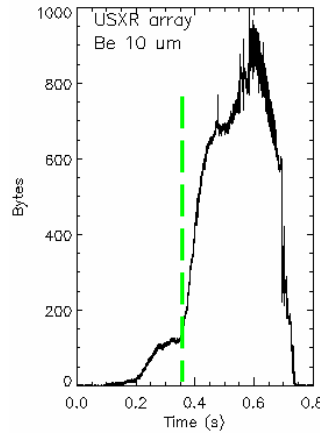
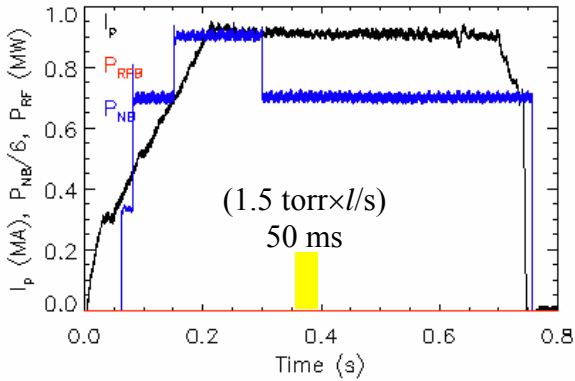
Neon



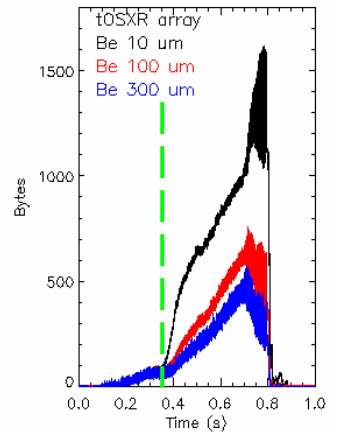
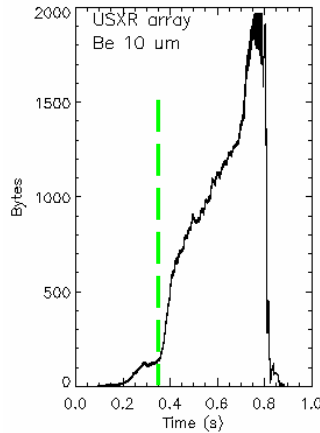
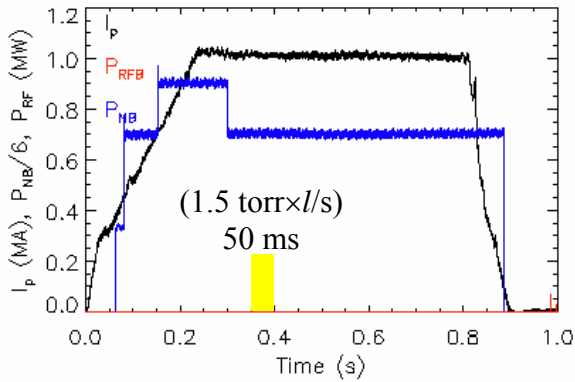
# $\rho$ -scaling

(from 0.9 MA & 4 kG  $\rightarrow$  1.2 MA & 5.5 kG)

NSTX # 121182, 0.9 MA, 4 kG



NSTX # 121165, 1 MA, 4.5 kG



NSTX # 121174, 1.2 MA, 5.5 kG

