

**XP 829 -
Magnetic shear effects
on transport**

Presented by H.Yuh



June 2, 2008
NSTX Monday Physics Meeting

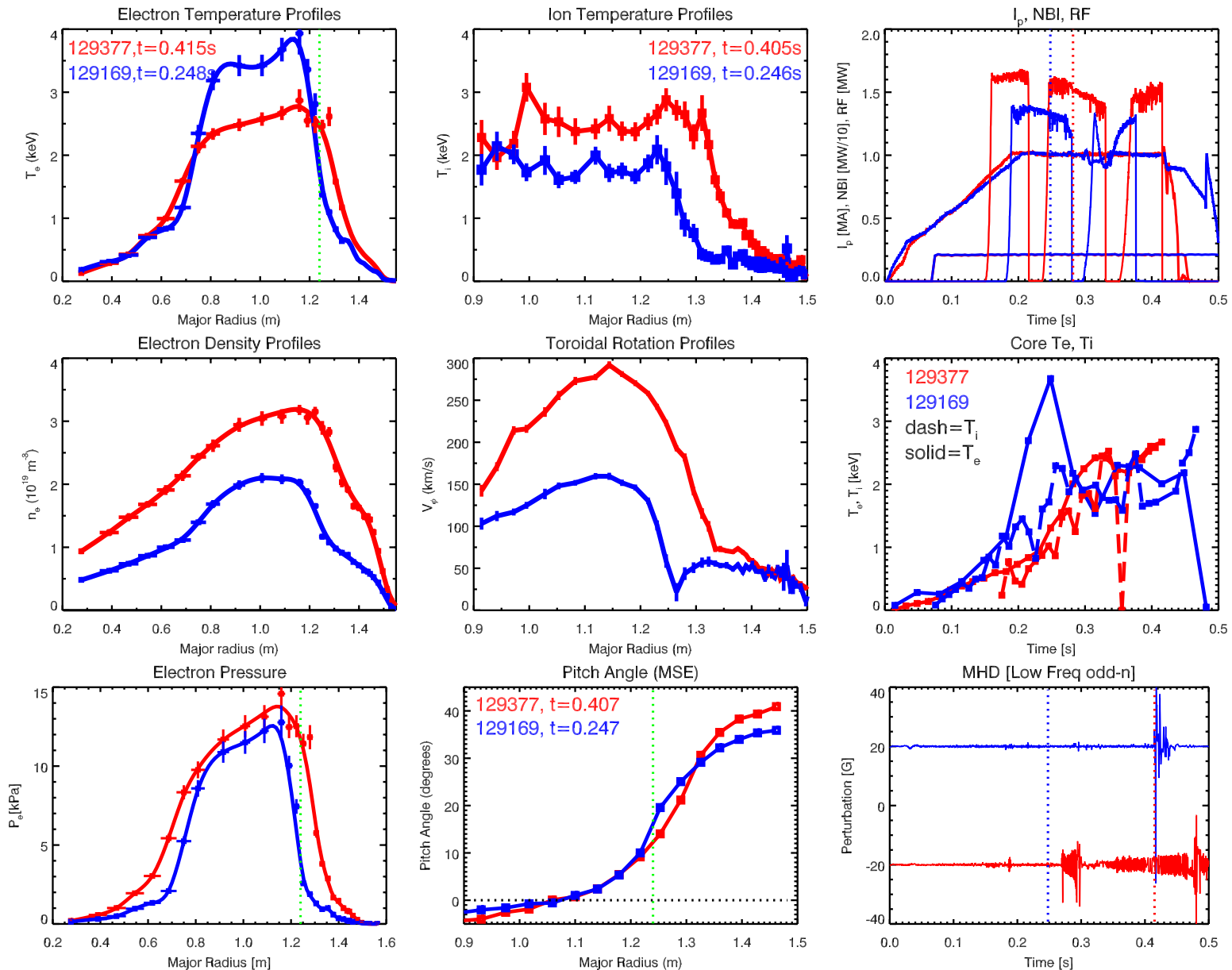
Achieved higher performance shots

Continued reversed shear plasma with RF in deuterium

Used LITER successfully, although somewhat unpredictably

- Moved ITB confinement region significantly, not seen in He previously
- Improved confinement region, stored energy
- More high-k activities observed
 - Aliasing effect shown on high rotation shots
 - Abundance of activity in H-mode provides good comparison
- H-mode threshold reduced to just over 2MW, tried to stay out of H-mode
 - H-mode discharges do not develop reversed shear
- Elusive ITB H-mode (double barrier) discharges still not seen...but new data may provide some insight

Comparison with previous He shots



Holy RF Heating Batman!

- H-mode, deuterium, core electron RF heating WITH src A at 90keV
- MSE measured no pitch angle changes during RF (not electron confinement)

