



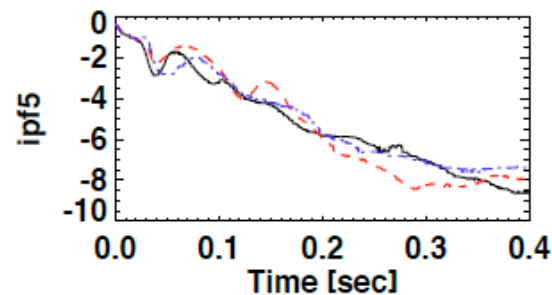
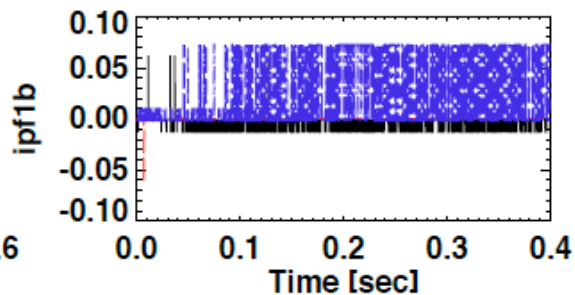
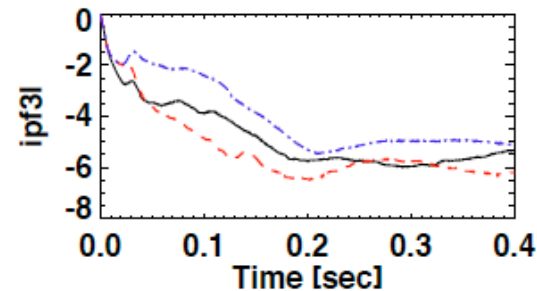
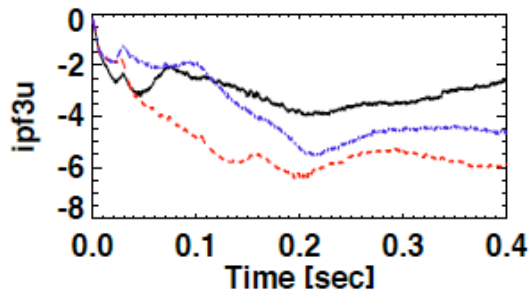
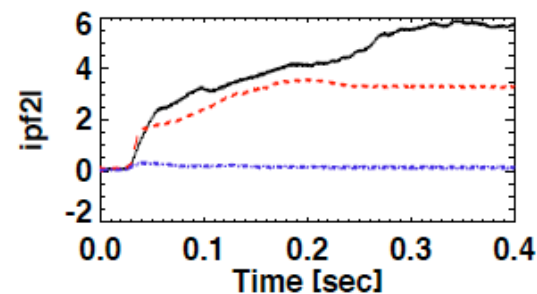
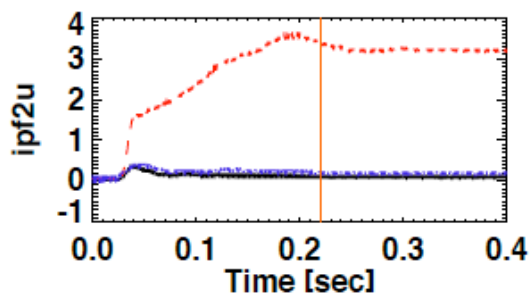
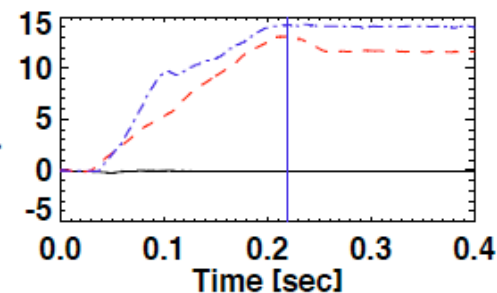
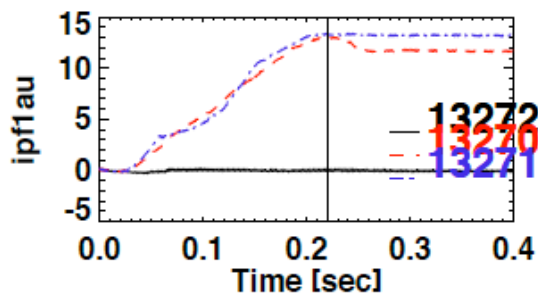
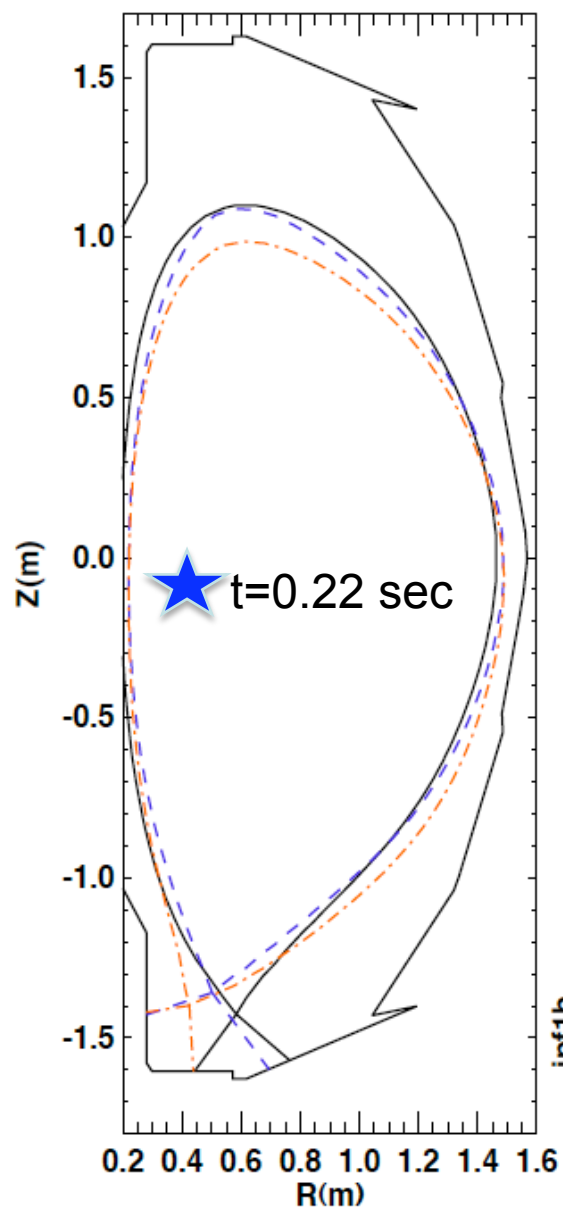
XP 909 – dependence of PLH on X-point radius

R. Maingi
(with lots of help)

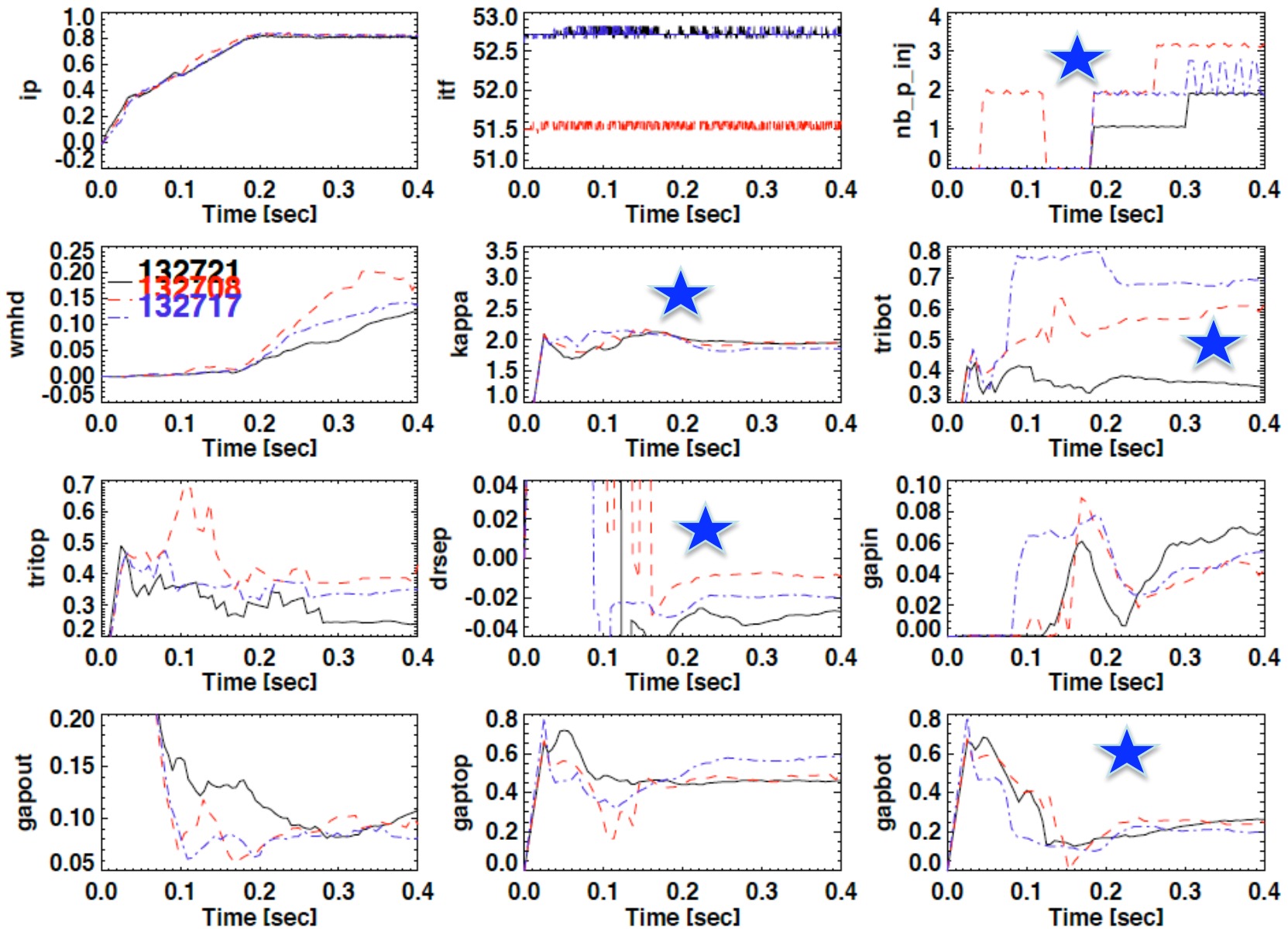
Oak Ridge National Laboratory

Monday Physics Meeting
Apr. 20, 2009

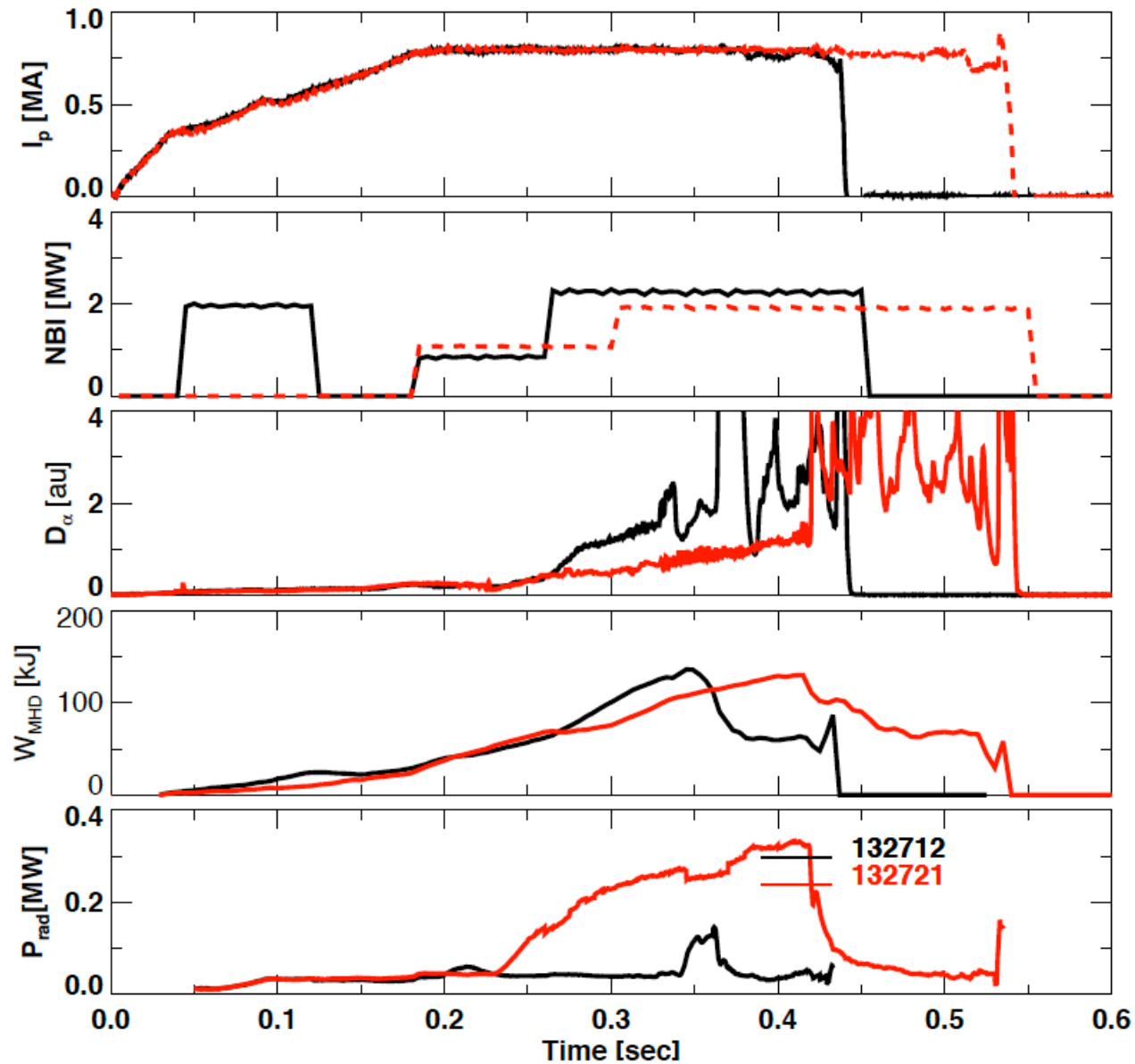
Three X-point radii and triangularities achieved



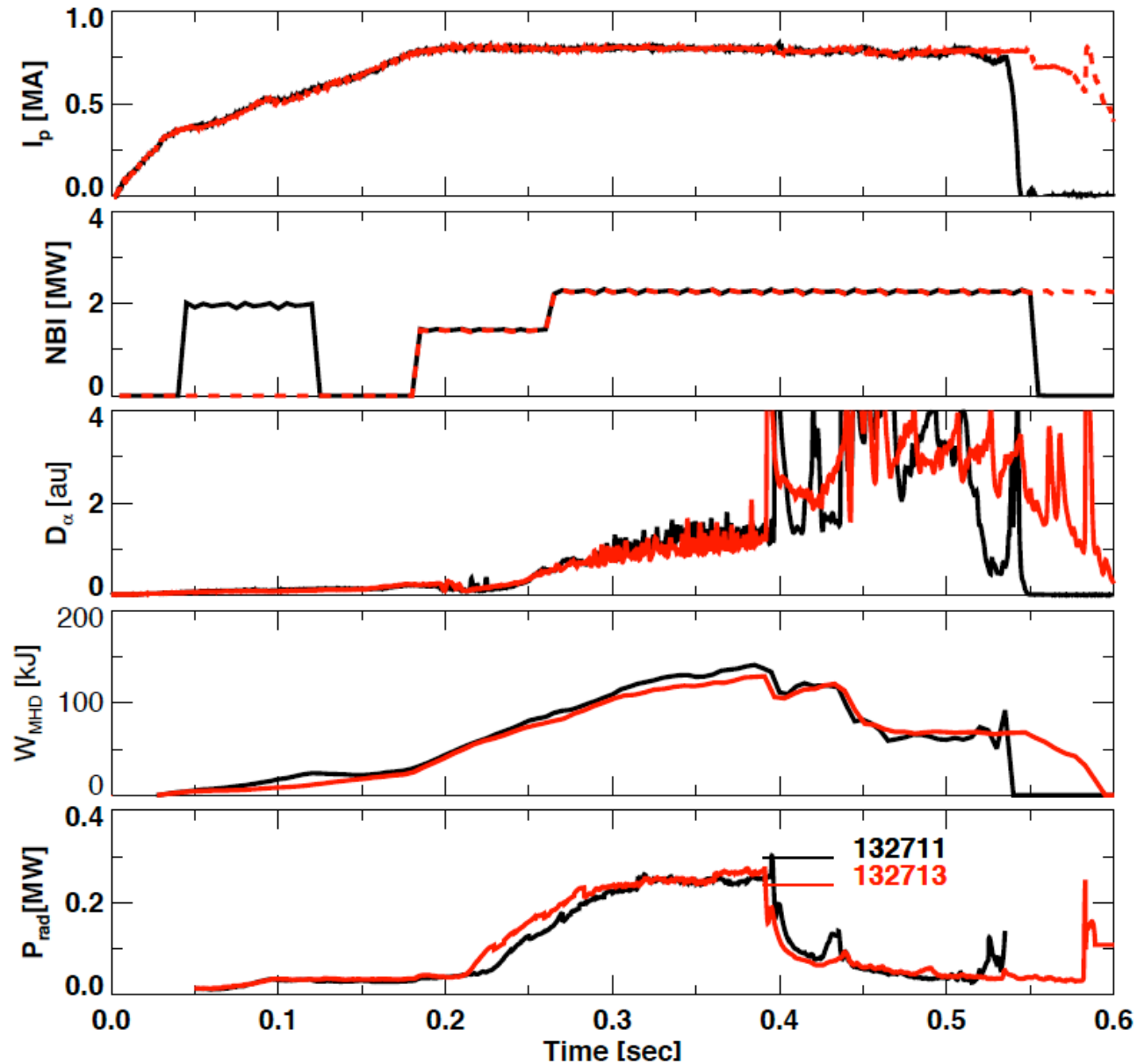
κ , bottom gap relatively well matched at 0.2 s, but δ_r^{sep} different
 $P_{\text{LH}}^{\text{NBI}}$ lowest for $\delta_L \sim 0.4$ and comparable for higher δ_L



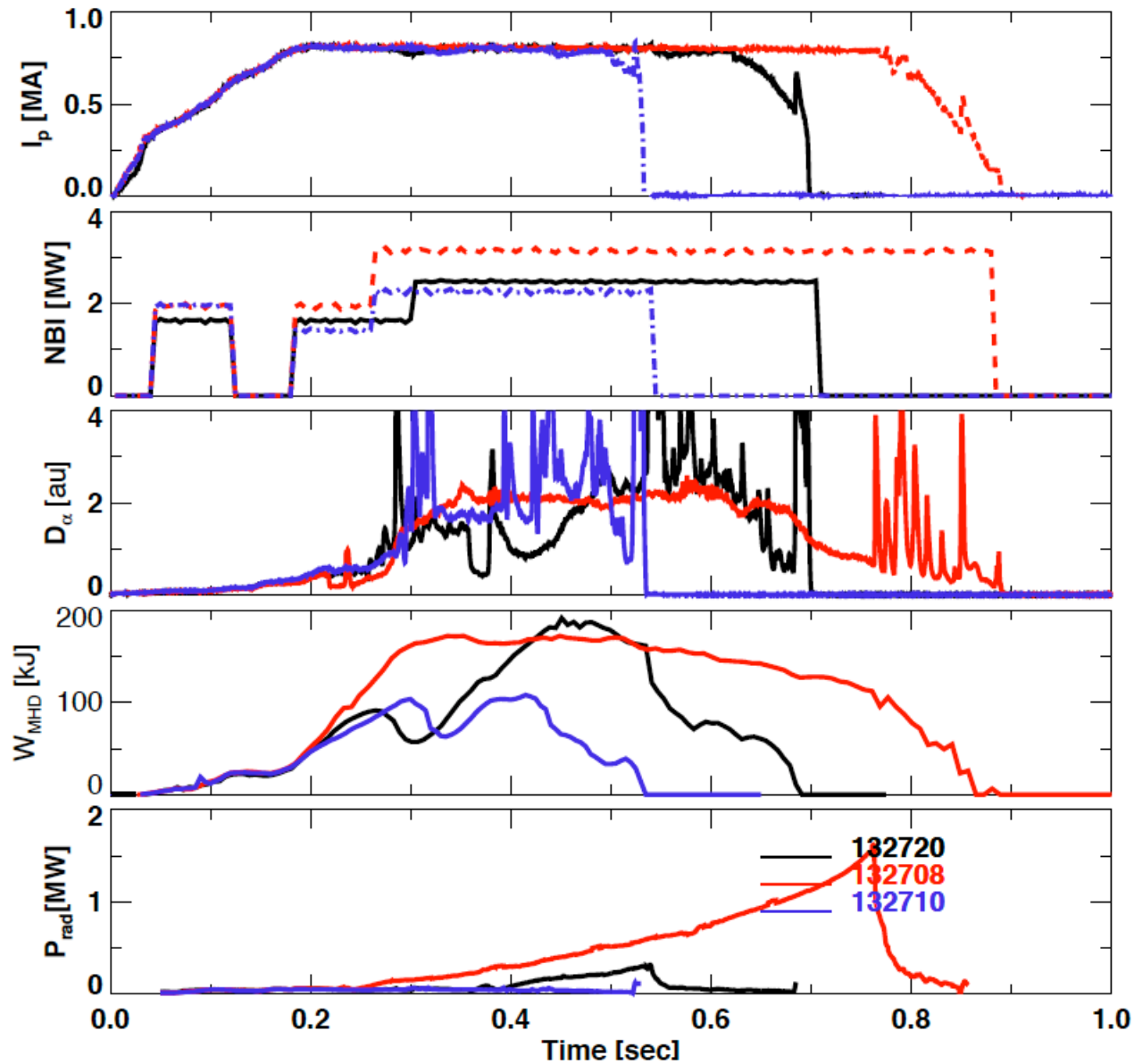
Low $\delta_L \sim 0.4$ has $P_{LH}^{NBI} < 1.1$ MW



Early P_{NBI} does not affect $P_{\text{LH}}^{\text{NBI}}$ (Low $\delta_L \sim 0.4$)



Medium $\delta_L \sim 0.55$ has $P_{LH}^{NBI} \leq 2$ MW



High $\delta_L \sim 0.7$ also has $P_{LH}^{NBI} \leq 2$ MW

