



U.S. DEPARTMENT OF
ENERGY

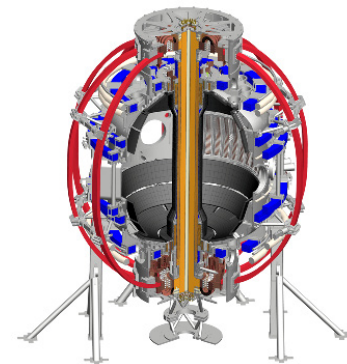
Office of
Science




18th International ST Workshop update

J. Menard

NSTX-U “Monday” Physics Meeting
PPPL B-318
October 6, 2015






ST Workshop link on NSTX-U home-page


 **National Spherical Torus eXperiment Upgrade** Search this site

[Home](#) [Meetings](#) [Drag & Drop](#) [Calendars](#) [Phone Book](#) [Sitemap](#)

NSTX-U Web Pages:

- Home**
- Overview
- Mission
- Accomplishments
- Collaboration Info
- Data Management Plan
- Diagnostics
- Five Year Plans
- Group Links / Files / Email
- Joint Research Targets
- Milestones
- Operations
- Organization
- Outreach Seminars
- Program
- Project
- Publications & Presentations
- Remote Connection Info
- Reports
- Research Forum - 2015
- Run Coordination
- Run Schedule Calendar
- Science Groups
- Scientific Conferences
- Software
- Surface Science
- Task Forces
- User Information Form
- Working Groups
- NSTX Upgrade Overview
- NSTX Upgrade Project

 U.S. DEPARTMENT OF **ENERGY** | Office of Science   **NSTX-U**



Upcoming and Recent NSTX-U Meetings:

- NSTX-U PAC-37 - January 26-28, 2016
- **18th International Spherical Torus Workshop (ISTW-2015)**
Princeton University, 3-6 November 2015
- [NSTX-U FY2015 Year-End Report](#)
- [Physics Operator Training Course](#)

Quick Links for Additional Information:

- Presentation templates: [PPT](#) [PPTX](#) [LaTeX](#)
- [Templates and Graphics Folder](#)
- [Run Schedule](#)
- [Experimental Proposals](#)
- [Monday Physics Meetings](#)

ST Workshop Nov 3-6 on main campus



ISTW-2015

Search this site

ISTW 2015 Web Pages:

Home

Abstract Submission (CLOSED)

Accommodations / Hotel

Agenda and Presentations

Conference Venue

Important Dates

Local Organizing Committee

Meeting Format

Objectives and Topics

Program Committee

Reception and Banquet

Registration and Payment Forms

Travel to Princeton

Visa Information

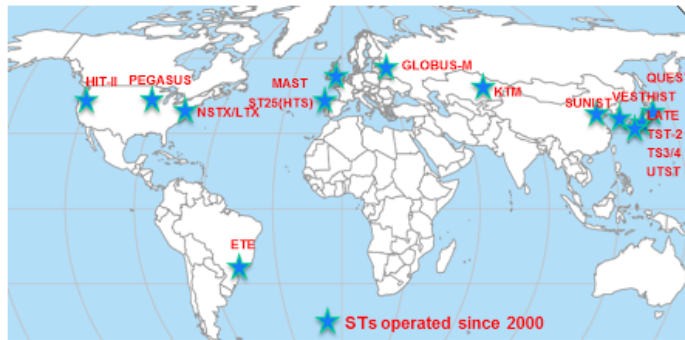
Sitemap

Other Useful Links:



18th International Spherical Torus Workshop (ISTW 2015) and 2015 US-Japan Workshop on ST Plasmas

Princeton University, 3-6 November 2015

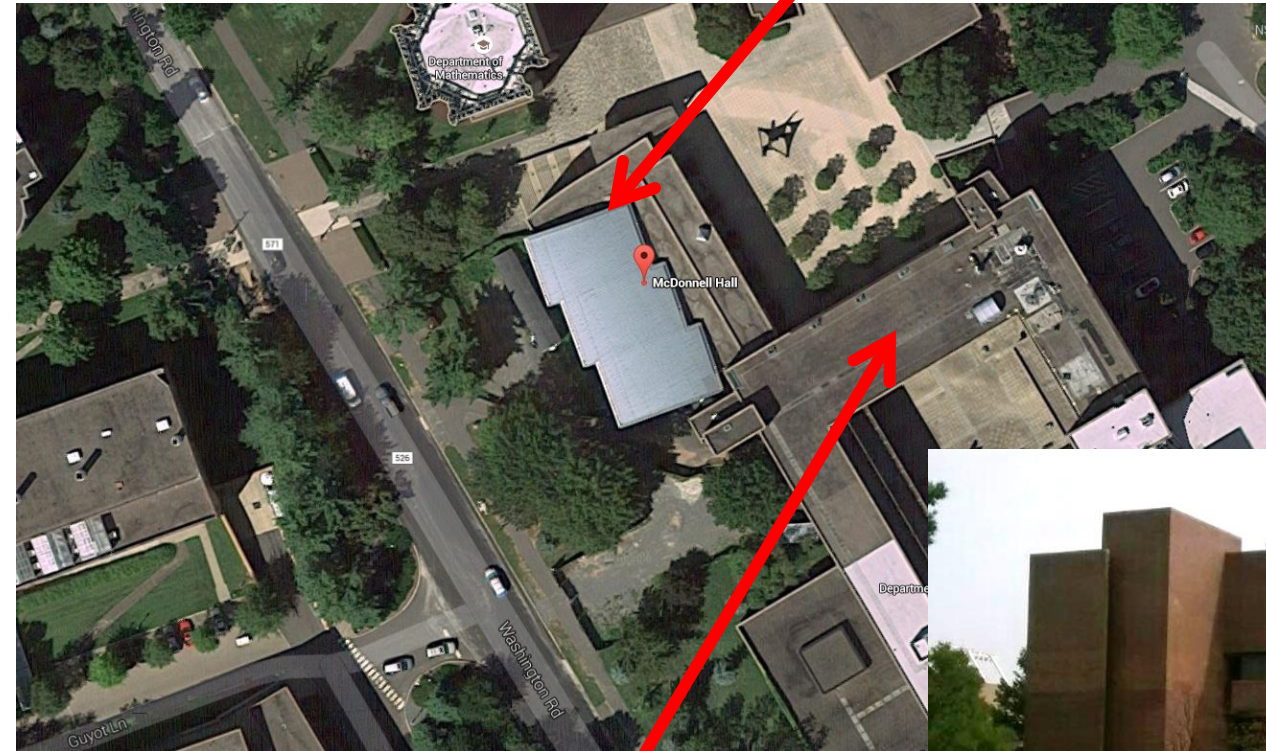


Introduction

The joint 18th International Spherical Torus Workshop (ISTW 2015) and 2015 US-Japan Workshop on ST Plasmas will be held during November 3-6, 2015 at Princeton University, Princeton, New Jersey, USA.

Meeting will be in A01 McDonnell Hall (next to Physics / Jadwin Hall)

Entrance to McDonnell Hall



McDonnell A01 Lecture Hall

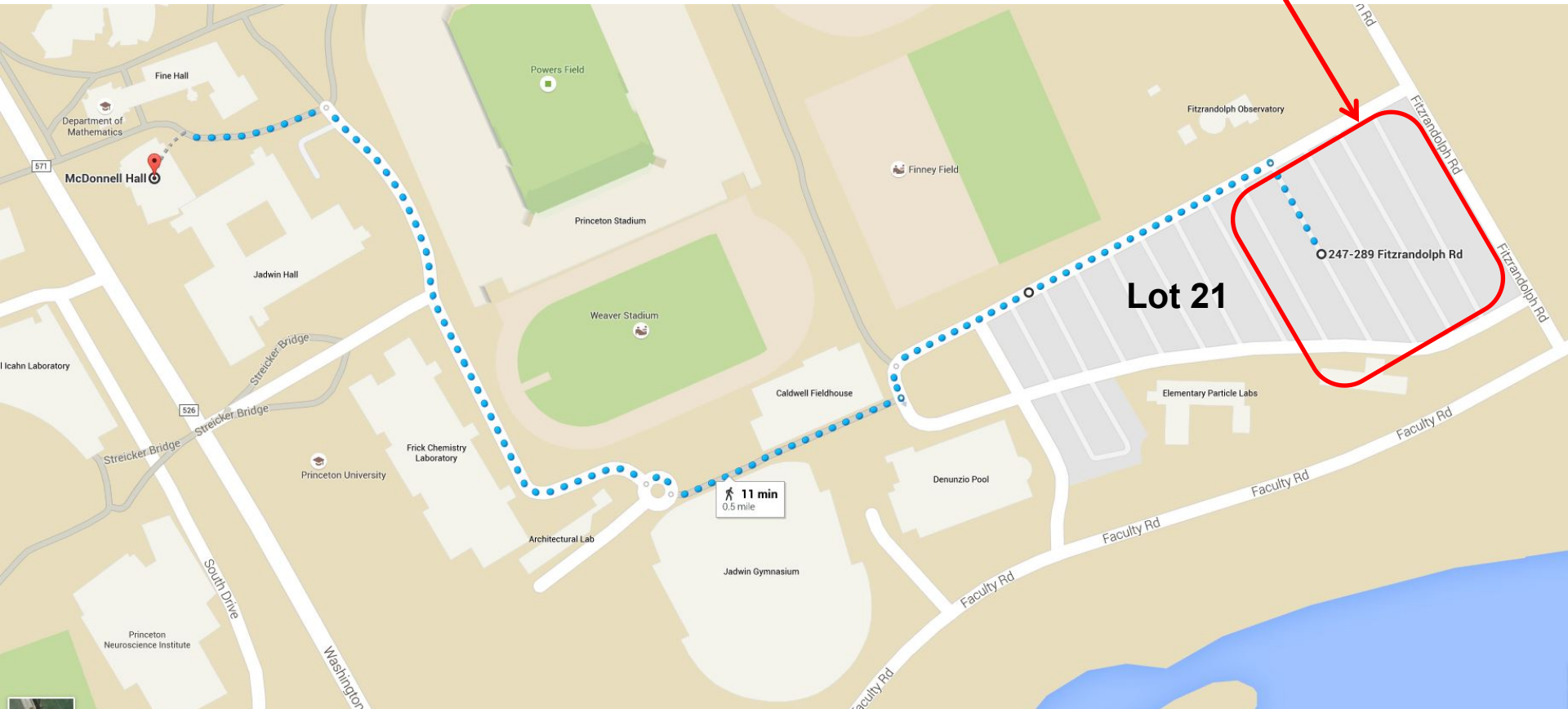
Jadwin



McDonnell Hall courtyard view

PPPLers can park in Lot 21, walk to McDonnell Hall (or take Tiger Transit from PPPL to/from main campus)

Visitor Parking Area



Program: 10 Overviews, 28 orals, 40 posters

~50% international covering CTs, start-up, EP, core/edge transport, MHD, boundary, RF

ISTW-2015 Program

Time	Tue 3 Nov				Wed 4 Nov				Thu 5 Nov				Fri 6 Nov			
8:00 – 8:30 AM	Registration				Registration				Registration							
8:30 – 8:40 AM	Logistics / updates / local info				Logistics / updates / local info				Logistics / updates / local info				Logistics / updates / local info			
8:40 – 10:15 AM	Extended Oral	S. Gerhardt	Abstract	Presentation	Extended Oral	K. Hanada	Abstract	Presentation	Extended Oral	Y. Takase	Abstract	Presentation	Extended Oral	Y. Hwang	Abstract	Presentation
	Oral	P. Micozzi	Abstract	Presentation	Oral	H. Tanabe	Abstract	Presentation	Oral	M. Nagata	Abstract	Presentation	Oral	J. Lee	Abstract	Presentation
	Oral	S. Cohen	Abstract	Presentation	Oral	H. Tanaka	Abstract	Presentation	Oral	F. Ebrahimi	Abstract	Presentation	Oral	M. Inomoto	Abstract	Presentation
	Oral	M. Gryaznevich	Abstract	Presentation	Oral	R. Raman	Abstract	Presentation	Oral	J. Reusch	Abstract	Presentation	Oral	F. Poli	Abstract	Presentation
10:15 – 10:45 AM	Coffee Break				Coffee Break				Coffee Break				Coffee Break			
10:45 AM – 12 PM	Extended Oral	A. Kirk	Abstract	Presentation	Extended Oral	Y. Ono	Abstract	Presentation	Extended Oral	Y. Tan	Abstract	Presentation	Extended Oral	D. Sutherland	Abstract	Presentation
	Oral	E. Fredrickson	Abstract	Presentation	Oral	S. Jardin	Abstract	Presentation	Oral	R. Minami	Abstract	Presentation	Oral	J. Menard	Abstract	Presentation
	Oral	Z. Gao	Abstract	Presentation	Oral	S. Sabbagh	Abstract	Presentation	Oral	R. Perkins	Abstract	Presentation	Discussion Session & Closing Remarks (11:40 AM – 12:30 PM) Official End of Workshop: 12:30PM			
LUNCH				LUNCH				LUNCH (12:20 – 1:45 PM)								
12:00 – 1:15 PM	LUNCH				LUNCH				LUNCH (12:20 – 1:45 PM)				US-Japan Collaboration Discussion Session (1:30-3PM)			
1:15 PM – 3:10 PM	Extended Oral	J. Menard	Abstract	Presentation	Extended Oral	R. Majeski	Abstract	Presentation	NSTX / PPPL Tour Bus leaves PPPL at 5:15 PM (Tentative) and returns to Nassau Inn 5:30-5:45PM							
	Oral	F. Alladio	Abstract	Presentation	Oral	Y. Ren	Abstract	Presentation								
	Oral	D. Battaglia	Abstract	Presentation	Oral	A. Thornton	Abstract	Presentation								
	Oral	M. Bongard	Abstract	Presentation	Oral	J.-W. Ahn	Abstract	Presentation								
	Oral	R. Maingi	Abstract	Presentation	Oral	H. Frerichs	Abstract	Presentation								
3:10 – 3:30 PM	Coffee Break				Coffee Break											
3:30 – 5:30 PM	Poster Session 1 (P1)				Poster Session 2 (P2)											
	P1-1	J. Yang	P1-11	W. Gutfenfelder	P2-1	S. Banerjee	P2-11	C. Ribeiro								
	P1-2	H. Furui	P1-12	E. Evans	P2-2	K. Gan	P2-12	P. Titus								
	P1-3	C. Swanson	P1-13	M. Podesta	P2-3	R. Lunsford	P2-13	B. Colling								
	P1-4	G. Hao	P1-14	D. Liu	P2-4	H. Lee	P2-14	L. El-Guebaly								
	P1-5	J. Berkery	P1-15	F. Wang	P2-5	J. Park	P2-15	Y. Jung								
	P1-6	G. Canal	P1-16	S. Medley	P2-6	K. Yamasaki	P2-16	H. Togashi								
	P1-7	I. Waters	P1-17	T. Bigelow	P2-7	M. Boyer	P2-17	M. Lee								
	P1-8	P. Jandovitz	P1-18	J. Jo	P2-8	Z. Ilhan	P2-18	S.-K. Kim								
	P1-9	W. Wang	P1-19	Y. Nozawa	P2-9	R. Yoneda	P2-19	J. Matteucci								
	P1-10	J. Ruiz-Ruiz	P1-20	N. Tsujii	P2-10	S. McNamara	P2-20	Z. Wang								

Catered wine reception at Princeton Art Museum
6-8PM (Tentative)

Banquet at Prospect House
Doors open 6PM (Tentative)
Dinner 7 - 9PM (Tentative)

- 3 additional events
 - Reception at Art Museum
 - NSTX-U / PPPL tour
 - Banquet at Prospect House

10 Extended Orals 30 + 5 min
28 Orals 15 + 5 min
40 Posters Width = 96 inches = 240 cm, Height = 48 inches = 120 cm

Logistics, remaining issues

- **All** participants must register
 - Registration is DOE reimbursable
<http://istw-2015.pppl.gov/registration-and-payment>
- **Need more NSTX-U / PPPL participants in reception and banquet (2 very nice venues)**
 - Dominated by international
 - Bad form when hosting a workshop
 - Have a drink – start a new collaboration!
 - Reception/banquet already significantly subsidized by director's office
- Please sign-up for at least 1 of the events – see Joanne Savino



Art Museum Wine Reception - \$30
Prospect House Banquet - \$70

