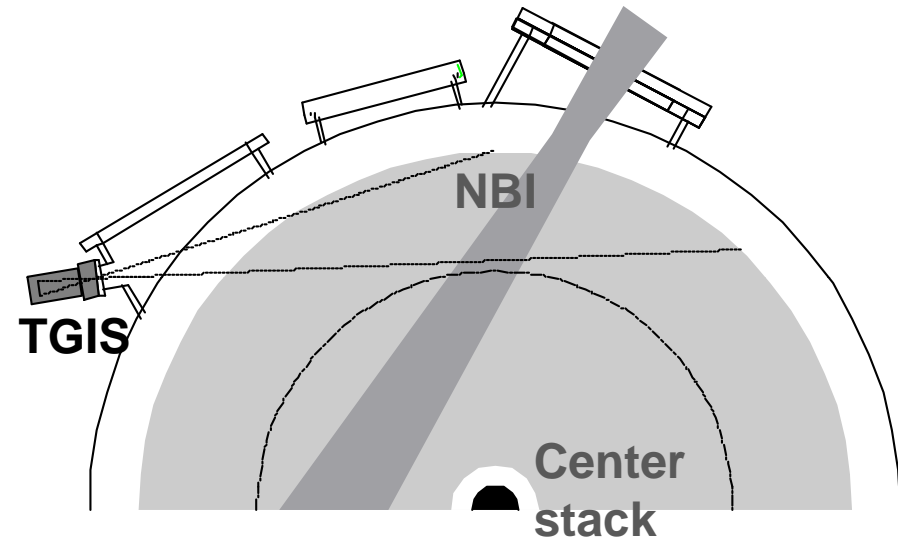
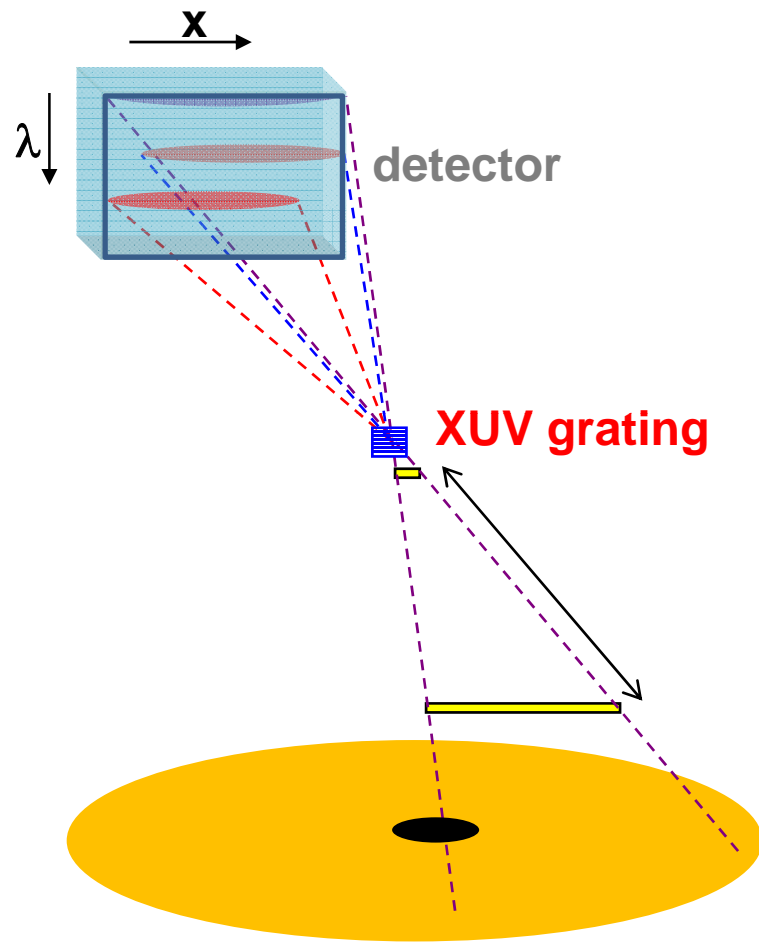


TGIS first data



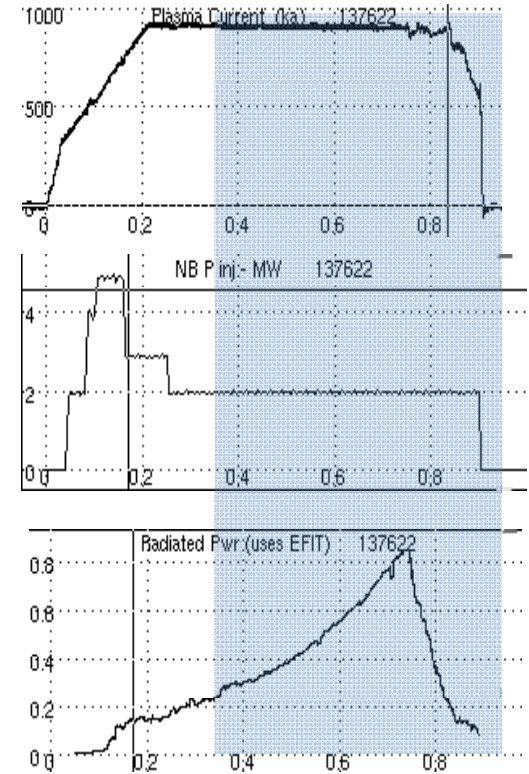
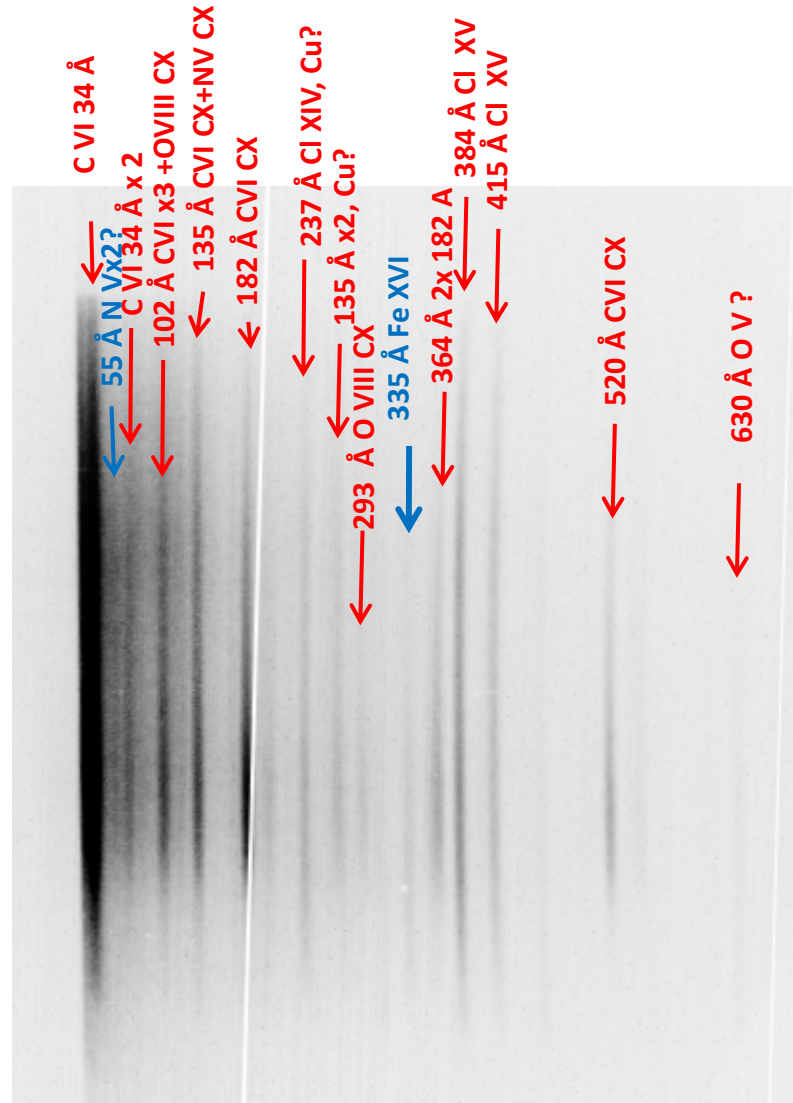
- Sees beam excited + electron excited emission
- 2 frames per shot at present

Shot 137622

Plasma axis

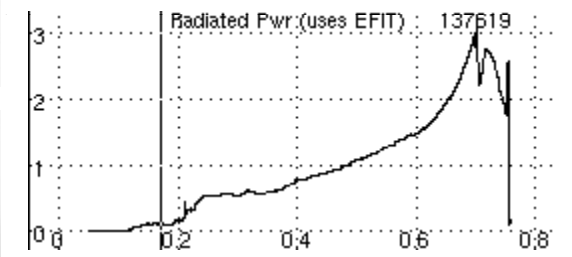
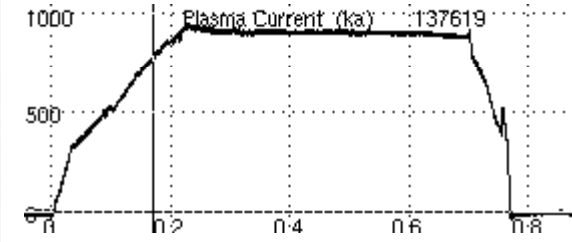
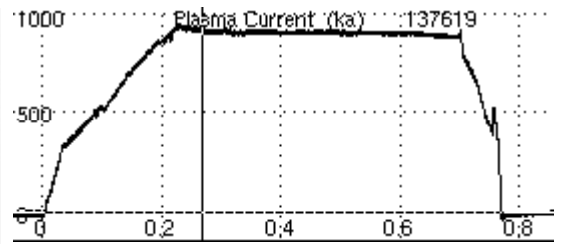
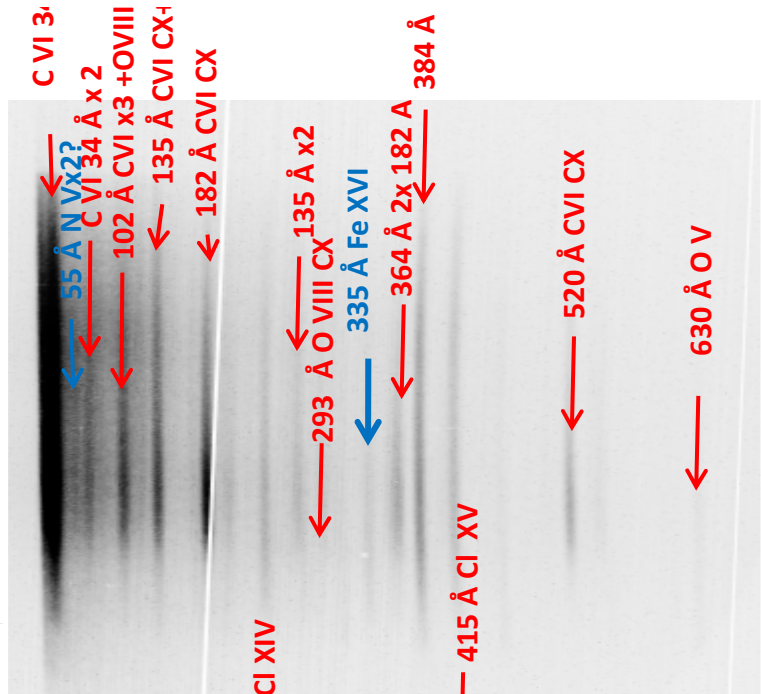


Beam (SrcA)



- We seem to see (in addition to C) , O, N?, Cl?, Cu?
- Not much iron, moly in this shot

• Fe, Cl accumulation at the end of some shots

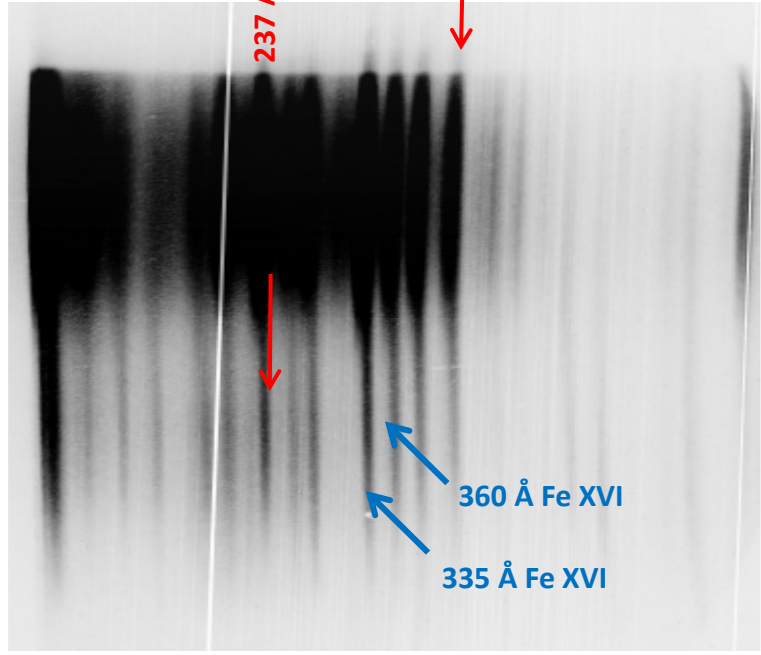


137619

Plasma axis

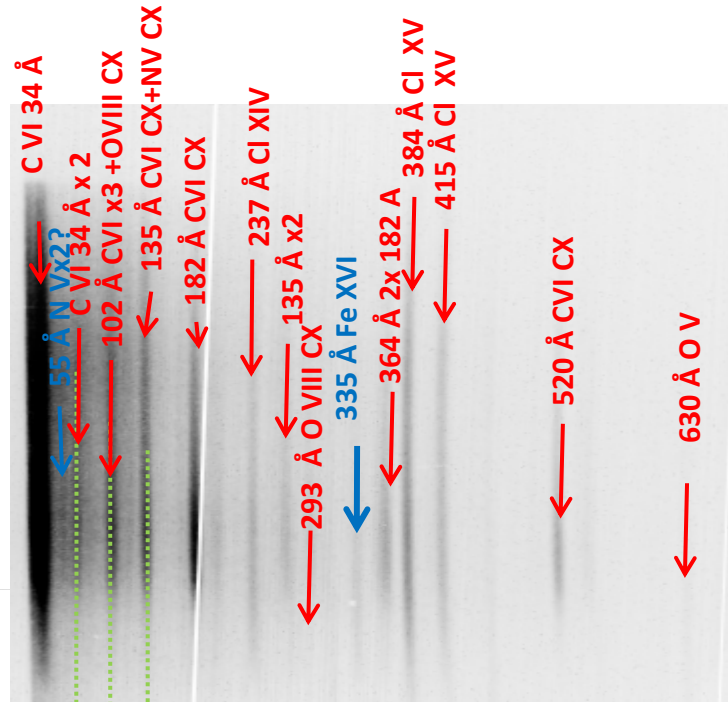


Beam (SrcA)



- Moly possibly when seen in divertor

Reference
137 622



Divertor Moly shot
137488
Moly 75 Å band?

