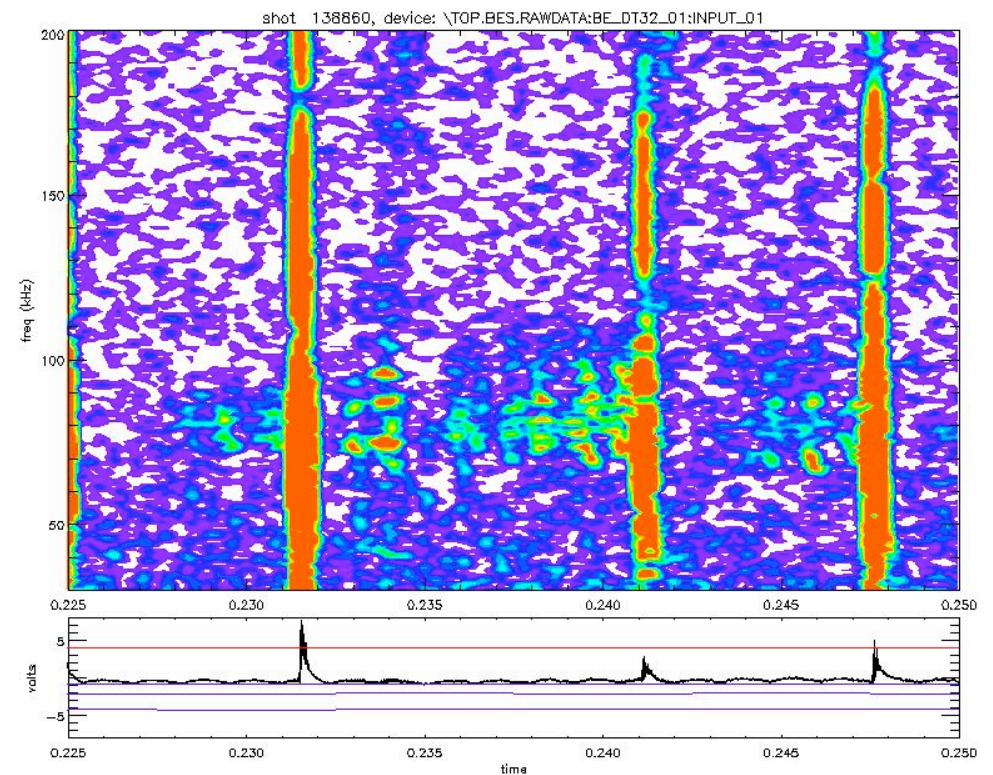
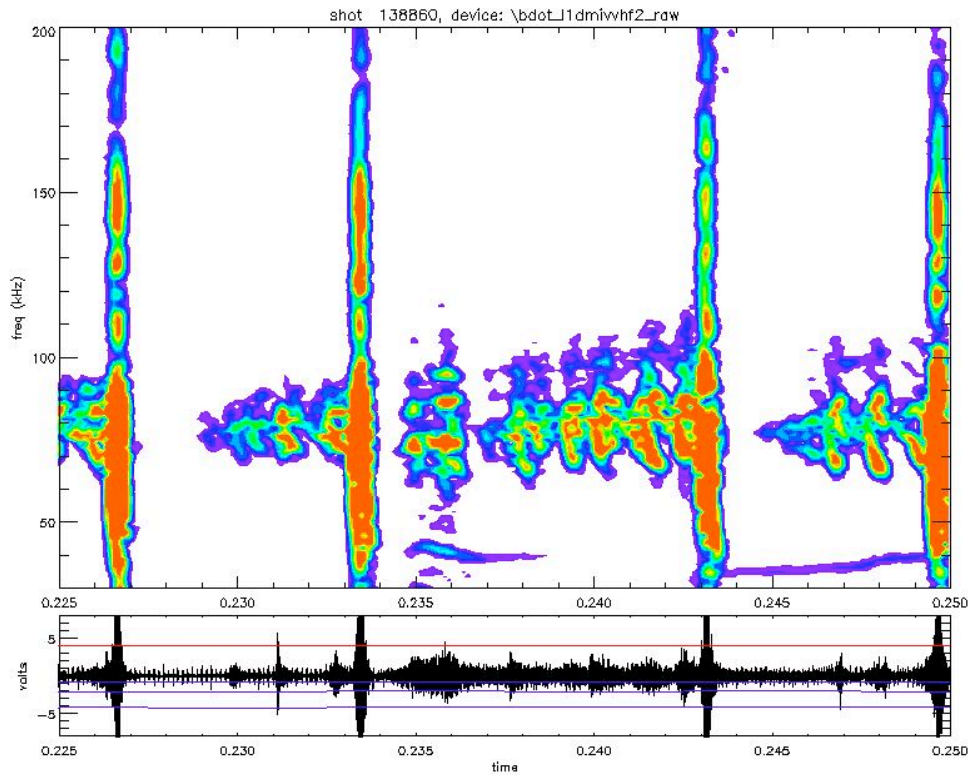


XP1011 - H-mode TAE Avalanches



- First BES measurements of internal amplitudes of TAE modes.
 - Only outer shutter operational, so don't have core data.

Some interesting evolution of dominant mode numbers

- Density scan, scan of outer gap, toroidal field and plasma current (1 shot).
- Reducing outer gap suppressed modes?

