



U.S. DEPARTMENT OF  
**ENERGY**

Office of  
Science

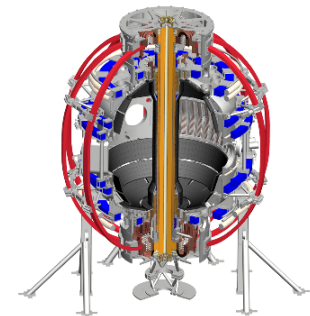


# 2D BES Commissioning and Initial Results

Matt Kriete, Dave Smith  
R. Fonck, G. McKee

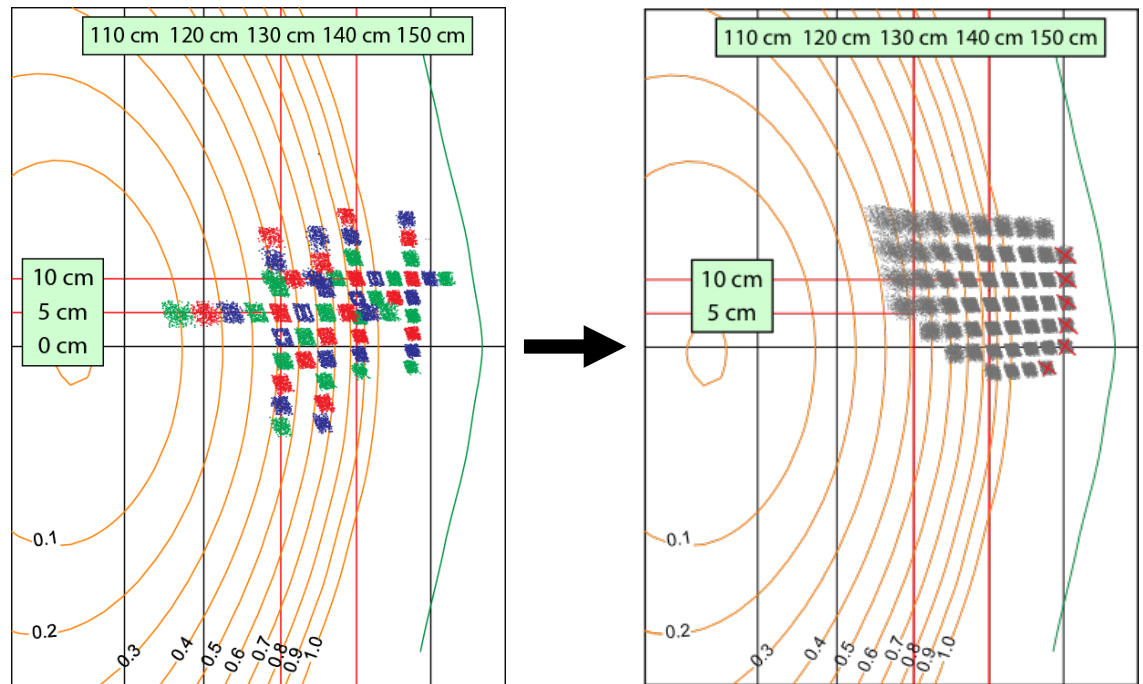
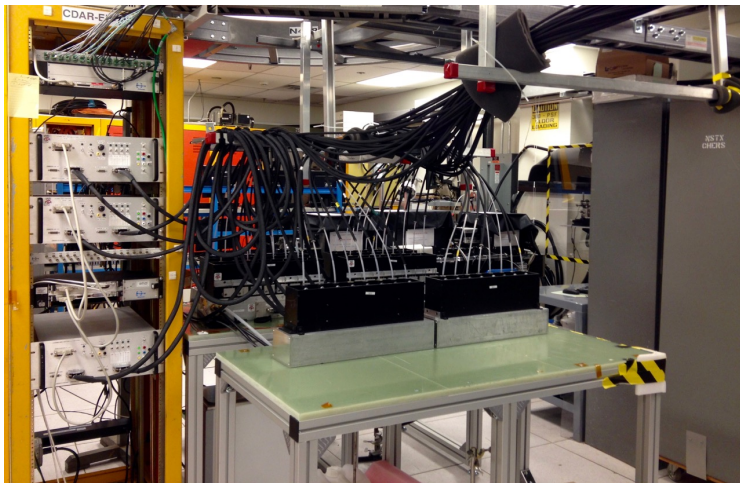


NSTX-U Results Review 2016



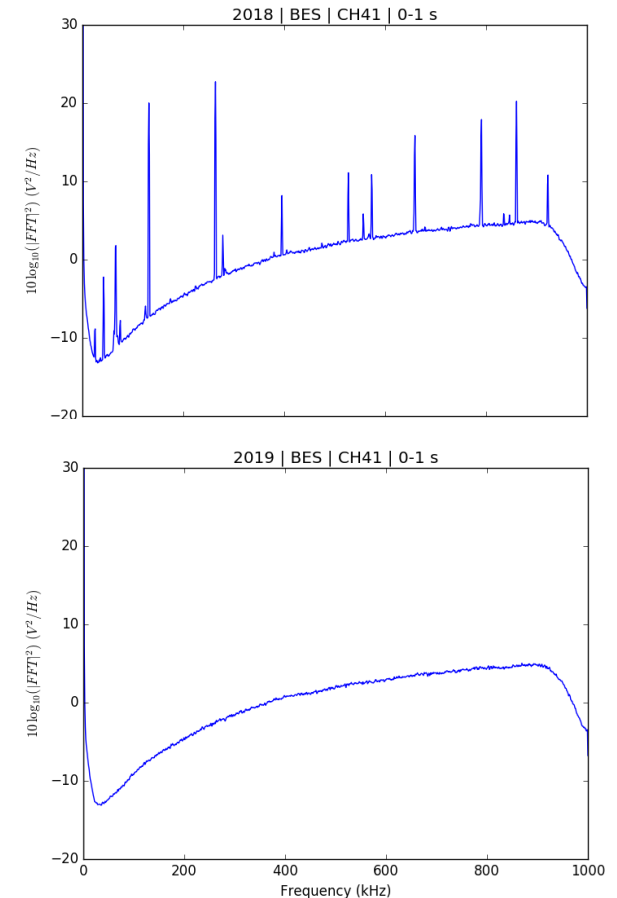
# BES system was reconfigured

- BES system expanded from 32 to 48 channels
  - 2D turbulence imaging
  - 2D flow analysis

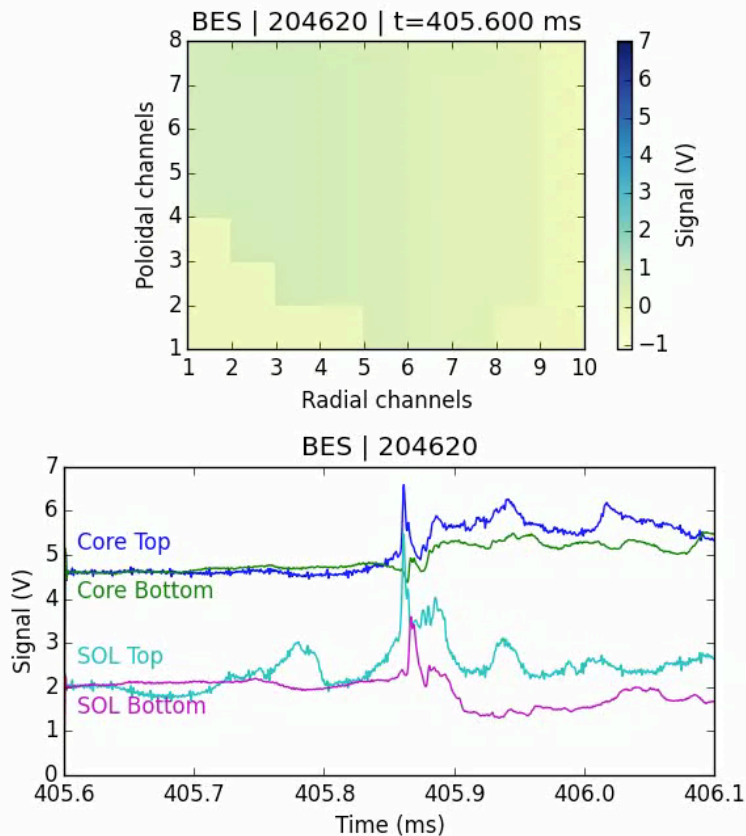


# Expanded BES system has been debugged

- Noise pickup on most channels
  - 8 noise-free, 8 low-noise channels
  - Found proper grounding configuration after end of plasma ops
- $f_{\text{sample}}$  mismatch between digitizers
  - Debugged by Greg Tchilinguirian



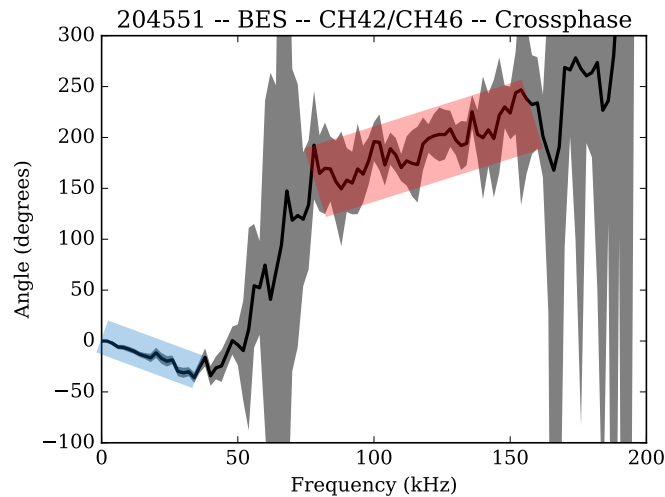
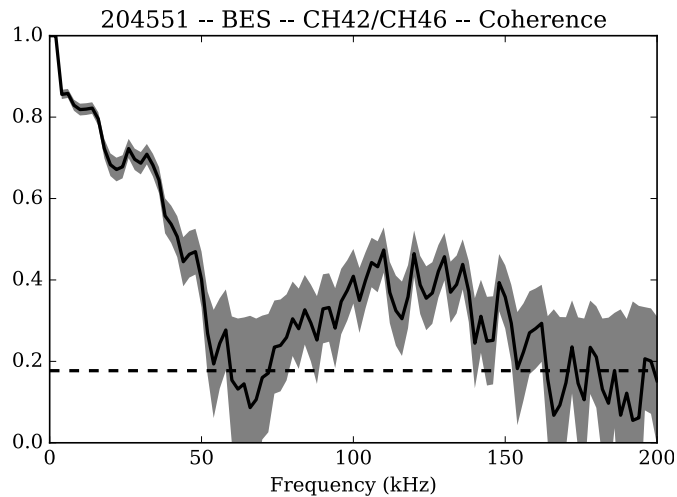
# 2D ELM structure observed



D. R. Smith, HTPD 2016 Invited Talk  
*Investigation of ELM Evolution Patterns on  
NSTX-U with Beam Emission Spectroscopy Measurements*

D. R. Smith, IAEA FEC 2016

# Bimodal turbulence seen in a L-mode shot



$\Delta Z = 3$  cm  
 $R = 142$  cm  
 $\Delta t = 24$  ms

13 km/s in electro  
diamagnetic direc  
11 km/s in ion  
diamagnetic direc

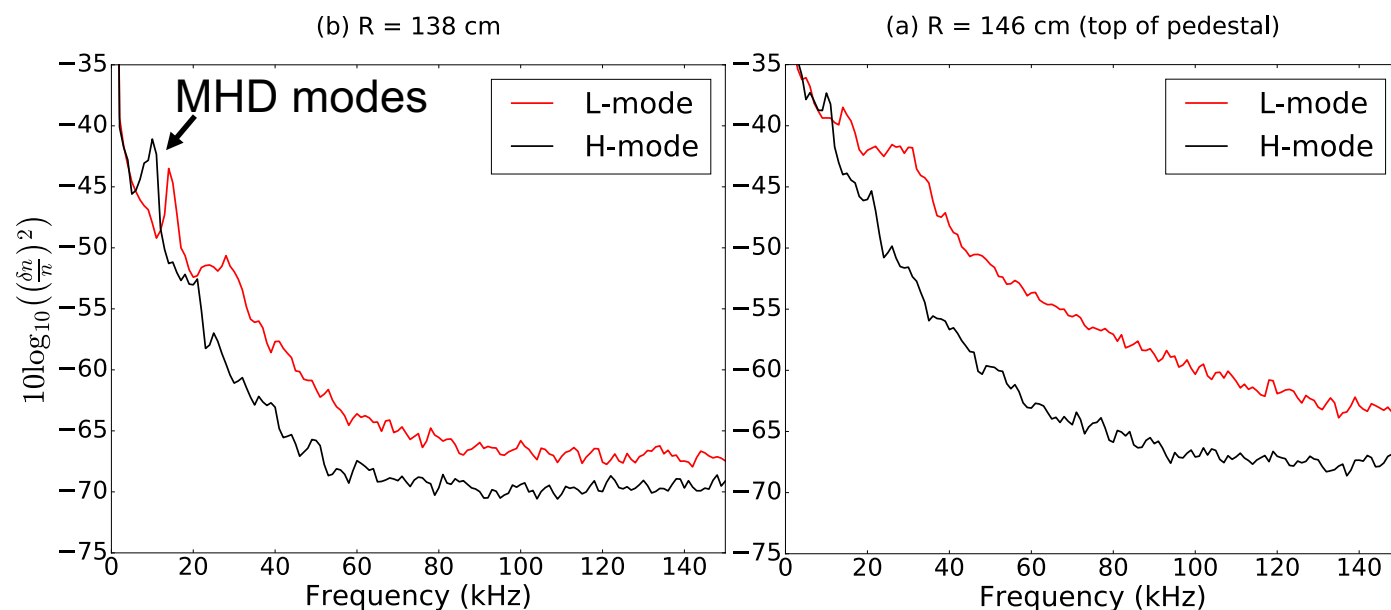
- Modes propagate in opposite directions
  - Similar spectra seen with DIII-D and TFTR BES
  - Potential link to grad B direction

# Turbulence amplitudes decrease after L-H transition

- Fluctuation comparison between near and far edge

– 6x reduction at pedestal top

– 3x reduction inward of pedestal



D. M. Kriete, APS DPP 2016, Shot 204990,  $I_p = 0.65$  MA,  $P_{NB} = 1$  M