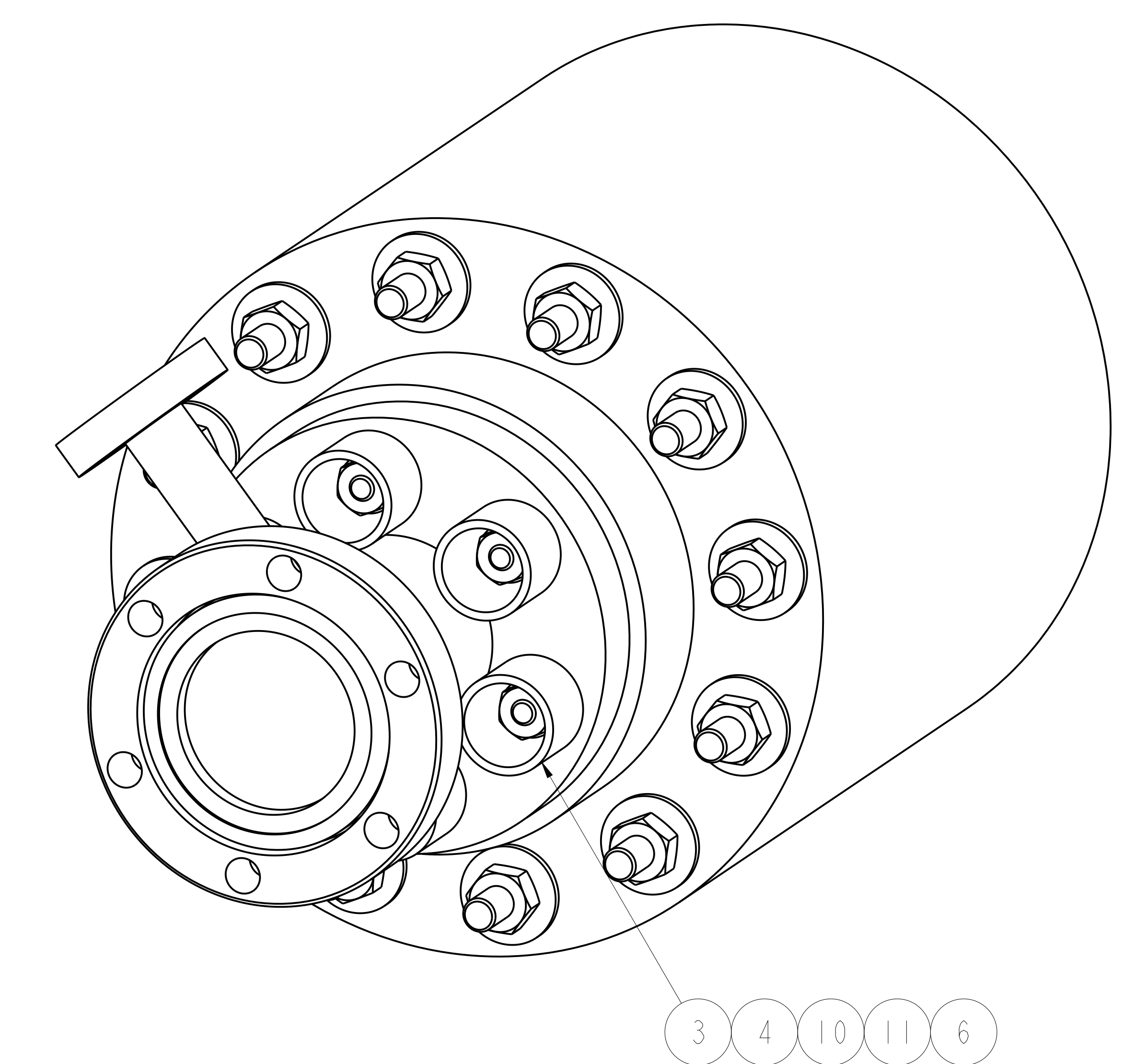
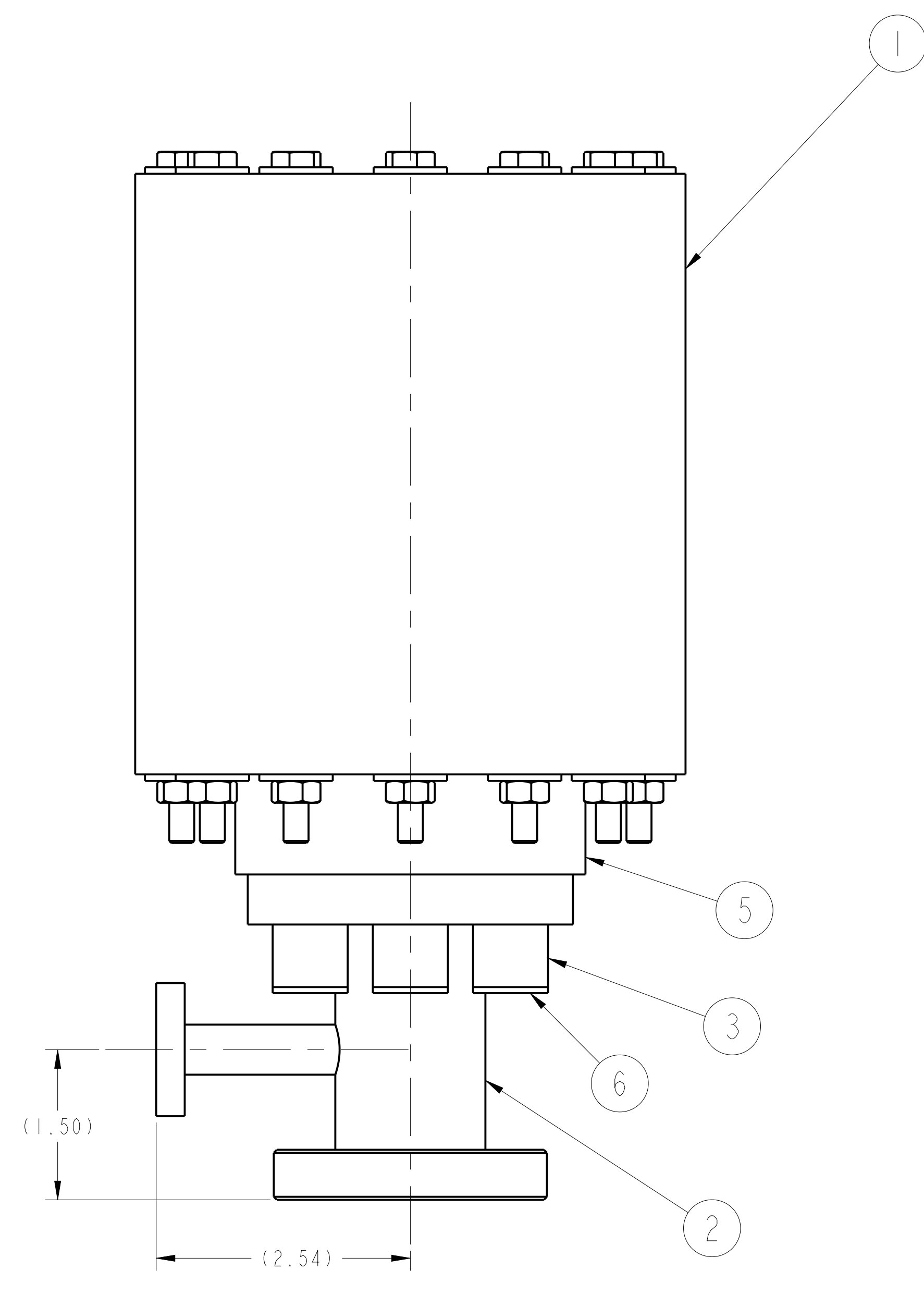
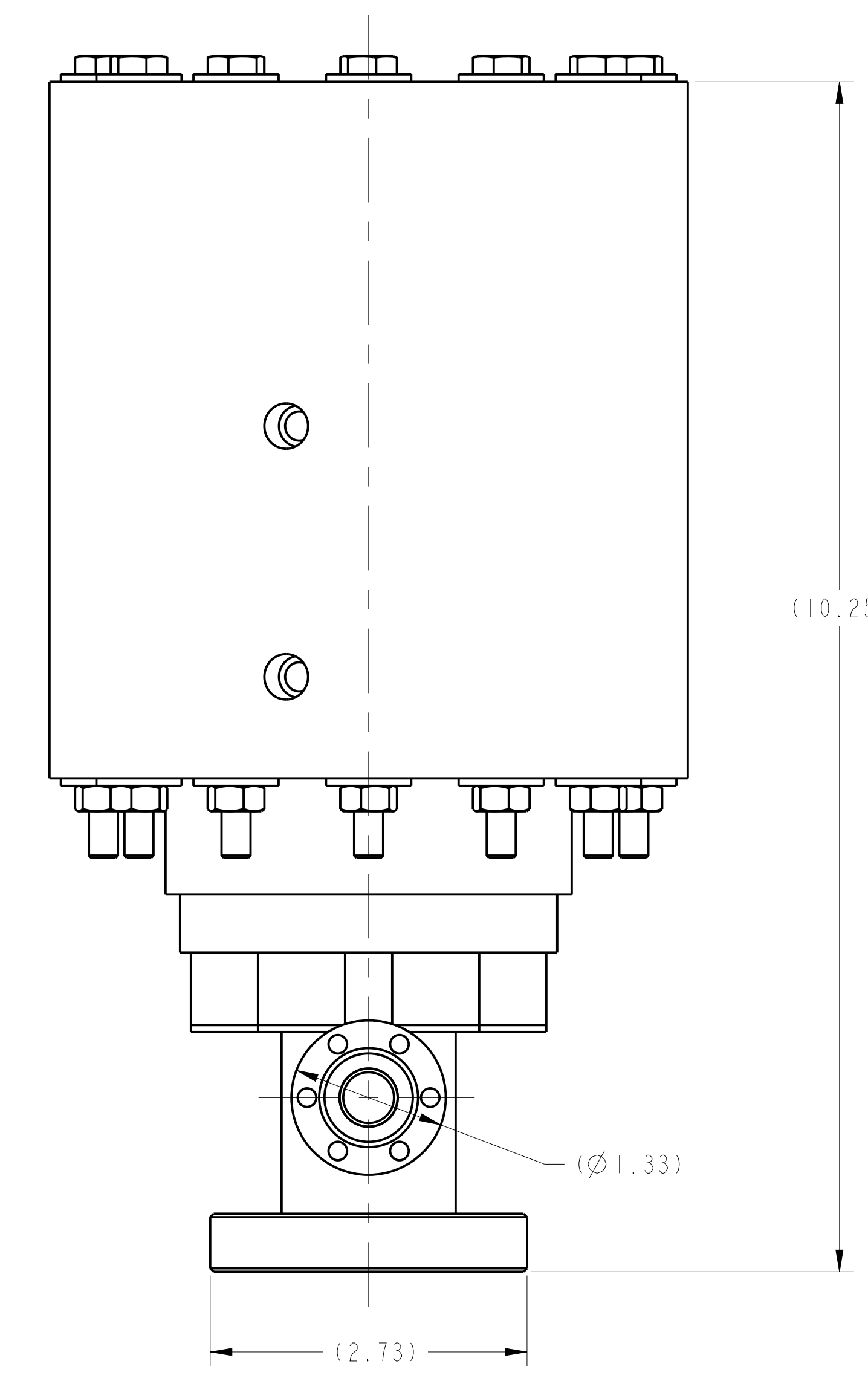
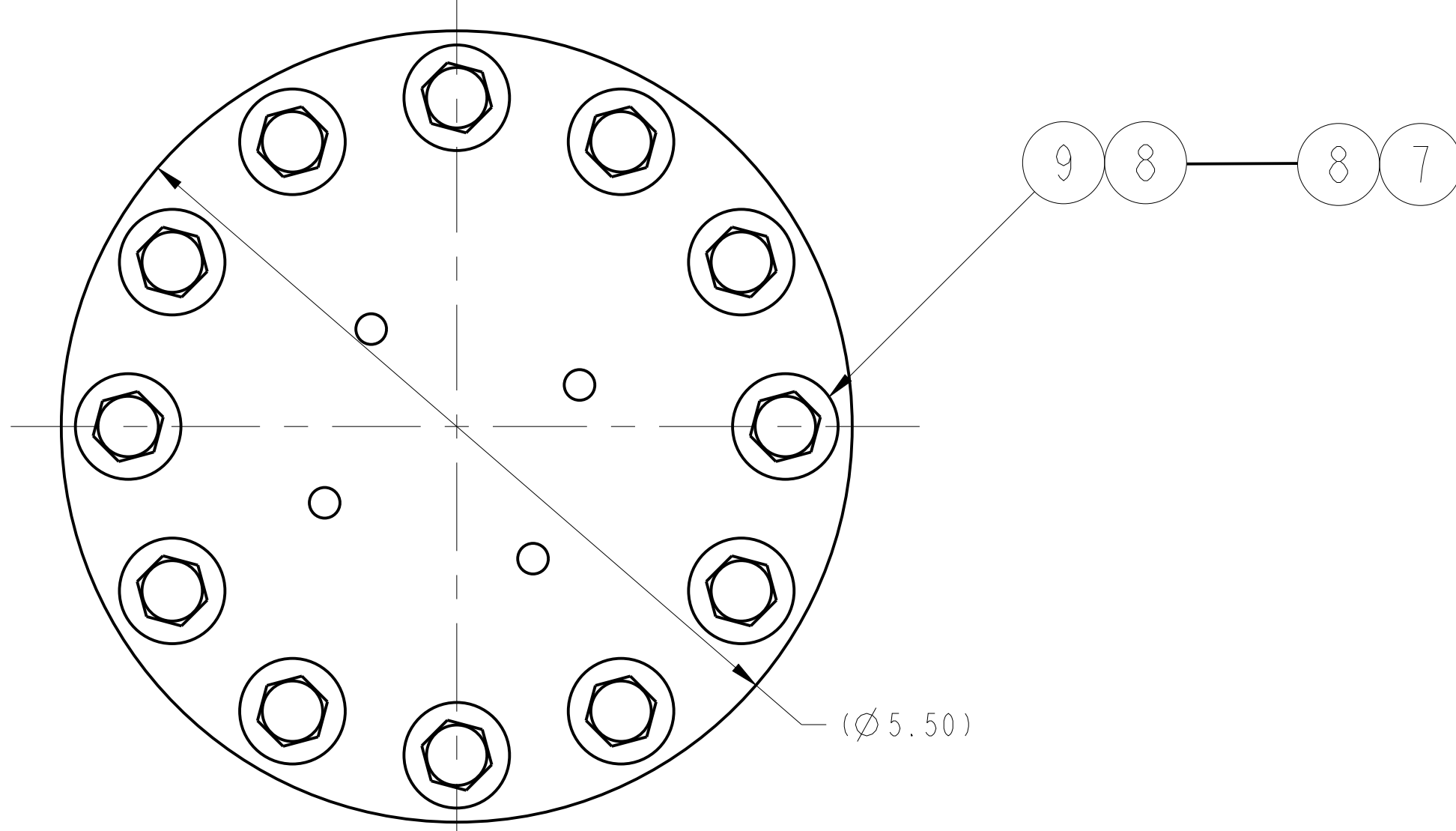
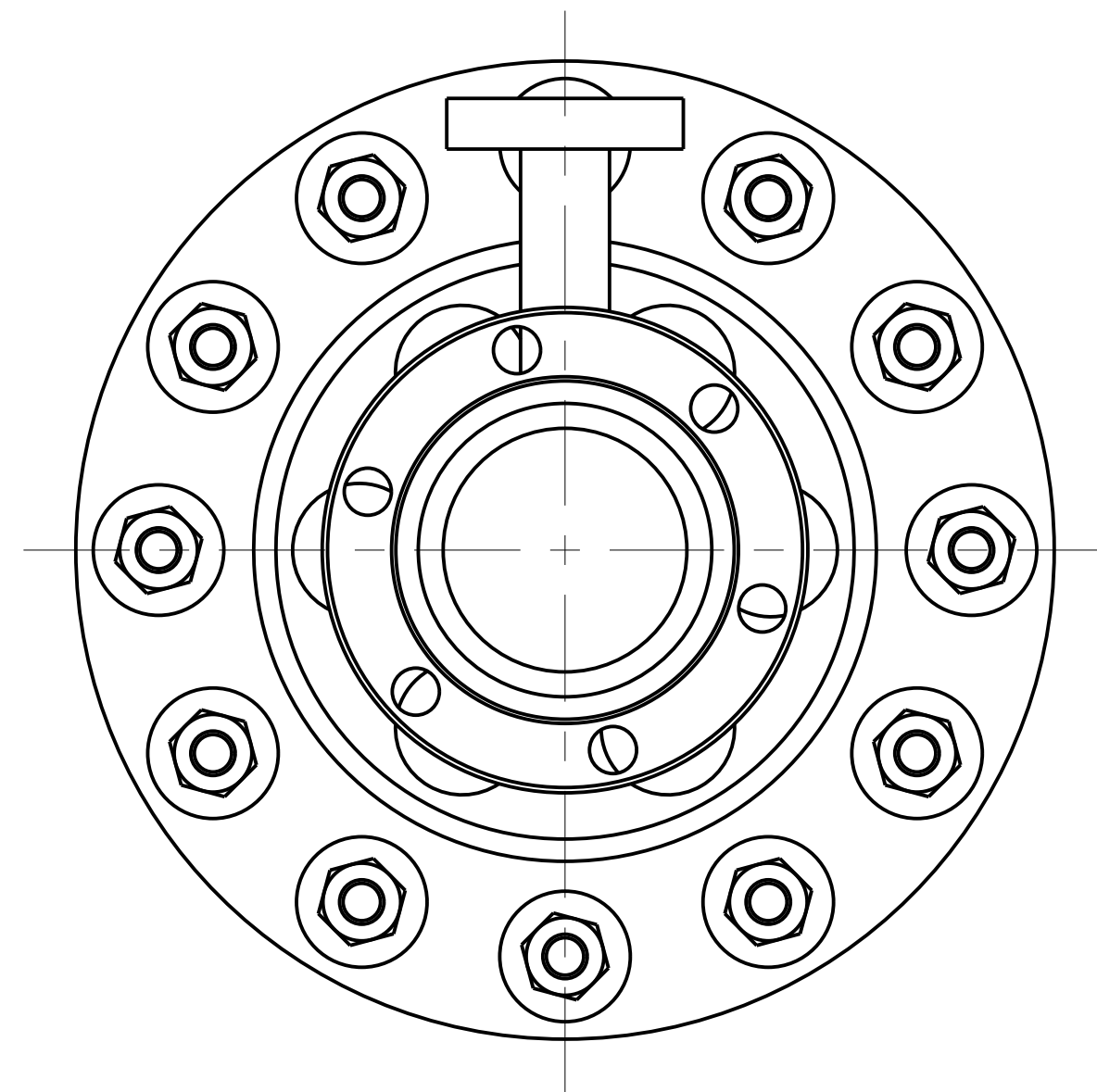


NO.	REVISION	WP NO.	BY	CH	SUP	APPROVED	DATE
0	ISSUED PER ECN-7634	2165	LM	NA	LM	N. ALLEN	2/25/2016



REFERENCE ISOMETRIC VIEW
(ITEM 6 REMOVED FOR CLARITY OF HARDWARE CALLOUTS)



01 ASSEMBLY - MID-PLANE AND LOWER MG1 VALVE ASSEMBLY

- NOTES:
- SECURE BOLT INSULATOR CAP, ITEM 6, IN PLACE USING A SMALL ADEQUATE AMOUNT OF EPOXY.
 - MAGNETIC PERMEABILITY OF S/S PARTS AS DETERMINED WITH SEVERN GAUGE SHALL NOT EXCEED THE FOLLOWING:
 BASE MATERIAL: 1.04 mu
 MACHINED: 1.20 mu

ITEM NO.	DRAWING NO.	NOMENCLATURE OR DESCRIPTION	MATERIAL	QTY REQD.
6	11	90257A411	#10-32 UNC-2B HEX NUT (MMC #90257A411)	316 S/S
6	10	90107A011	#10 FLAT WASHER (7/16 O.D. x .040 THK) - MMC #90107A011	316 S/S
12	9	NS150109	1/4-28 UNF-2A x 6 3/4 LG HEX HEAD BOLT	316 S/S
24	8	151317	1/4 FLAT WASHER	316 S/S
12	7	150272	1/4-28 UNF-2B HEX NUT	316 S/S
6	6	E-EA3534-4	MG1 VALVE BOLT INSULATOR CAP	SEE DWG
1	5	E-EA3534-3	MG1 VALVE INSULATING FLANGE	SEE DWG
6	4	E-EA3534-2	MG1 VALVE STEPPED THREADED STUD	SEE DWG
6	3	E-EA3534-1	BOLT INSULATOR - TYPE "C"	SEE DWG
1	2	E-EA3506-02	MG1 VALVE ADAPTER SPOOL PIECE W/ PUMP/OUT WELDMENT	SEE DWG
1	1	E-EA3535-1	MG1 VALVE BODY ASSEMBLY (UNIV OF WASH)	
01		THIS DWG	MID-PLANE AND LOWER MG1 VALVE ASSEMBLY	2

ITEM NO.	DRAWING NO.	NOMENCLATURE OR DESCRIPTION	MATERIAL	QTY REQD.
01		THIS DWG	MID-PLANE AND LOWER MG1 VALVE ASSEMBLY	2

COMPUTER GENERATED DRAWING
 MANUAL CHANGES NOT PERMITTED
 Pro E
 DO NOT VERIFY INFORMATION BY SCALING DRAWING
 SCALE: 1/1
 NEXT ASSEMBLY: E-EA3511, E-EA3512
 TOLERANCES: NON-CUMULATIVE
 DECIMAL-INCH: .0005, .001, .002, .005, .010, .015, .030, .050, .100, .150, .300, .500, 1.000
 FRACTIONS: 1/16, 1/8, 3/16, 1/4, 3/8, 1/2, 5/8, 3/4, 7/8, 1.000
 ANGLES: 30°, 45°, 60°, 90°, 120°, 150°, 180°
 CENTRAL FILES: UNLESS OTHERWISE SPECIFIED
 DIMENSIONS ARE IN INCHES
 MACHINE SURFACES: BREAK SHARP EDGES .005/.020
 PRINCETON PLASMA PHYSICS LABORATORY
 NATIONAL SPHERICAL TORUS EXPERIMENT
 GAS INJECTION SYSTEM
 MASSIVE GAS INJECTION SYSTEM
 MID-PLANE AND LOWER MG1 VALVE ASSEMBLY
 DIV: MECH. ENG. DATE: 2/25/2016
 ENG: N. ALLEN
 DSN: L. MORRIS
 CHK: N. ALLEN
 SHEET 1 OF 1 REV 0
 E-EA3535

GENERAL NOTES

- PPPL APPROVED DRAWINGS TAKE PRECEDENCE OVER MODEL DIMENSIONS.
- WHEN MODELS ARE PROVIDED, VENDOR MUST VERIFY THAT MODEL DIMENSIONS CONFORM WITH PPPL APPROVED DRAWINGS PRIOR TO FABRICATION.

MAGNETIC PERMEABILITY REQUIREMENT (SEE NOTES)	
YES	<input checked="" type="checkbox"/>
NO	<input type="checkbox"/>

RELEASE LEVEL: WIP
 DWG VERSION NO: 0.1
 WELDING ENGINEER
 APPVD: SIA DATE: